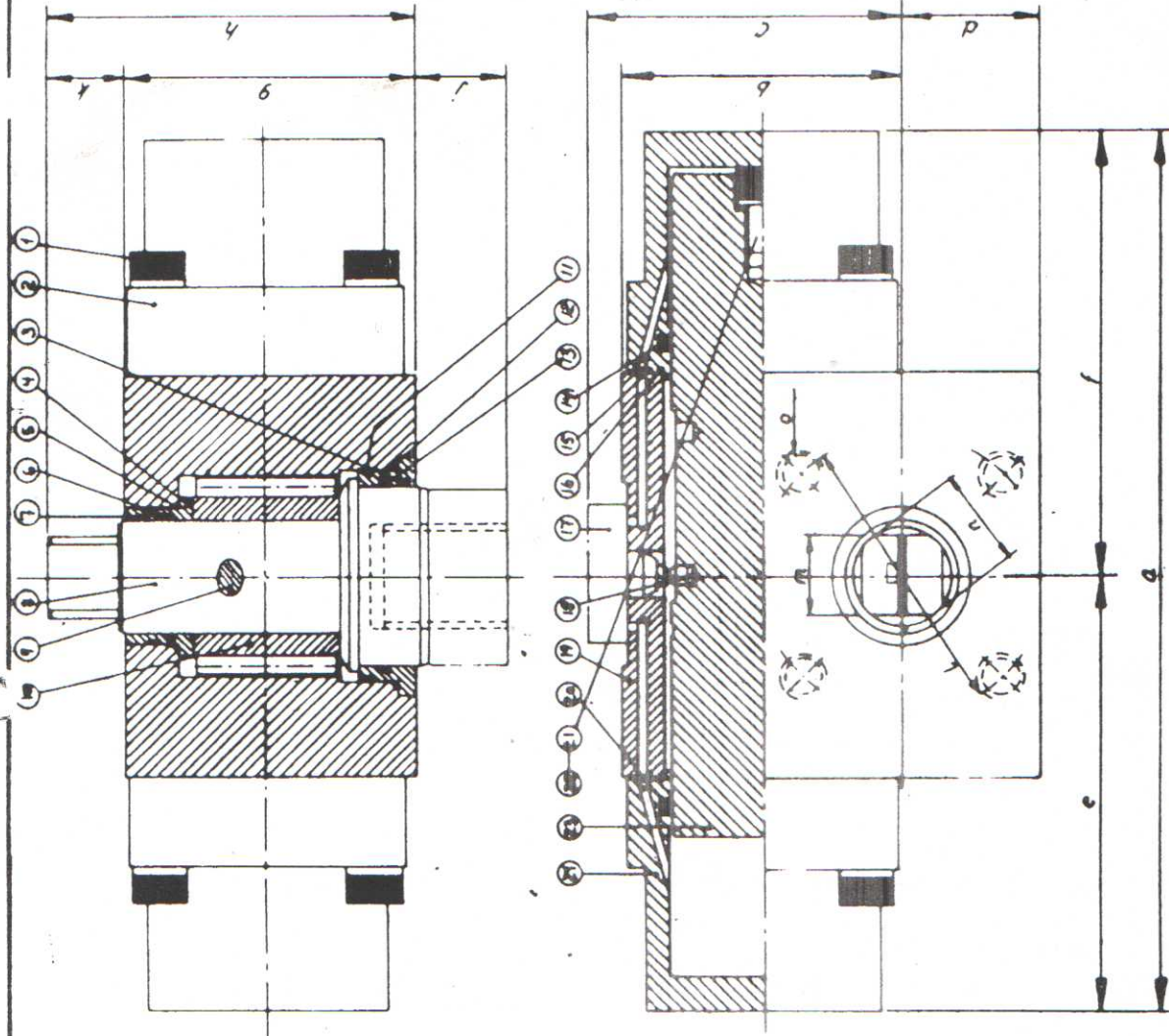


85.11.05.
 TP 180 BAR
 CPN 852633
 BNE 00.13

Таблица ха
 → арыамопе



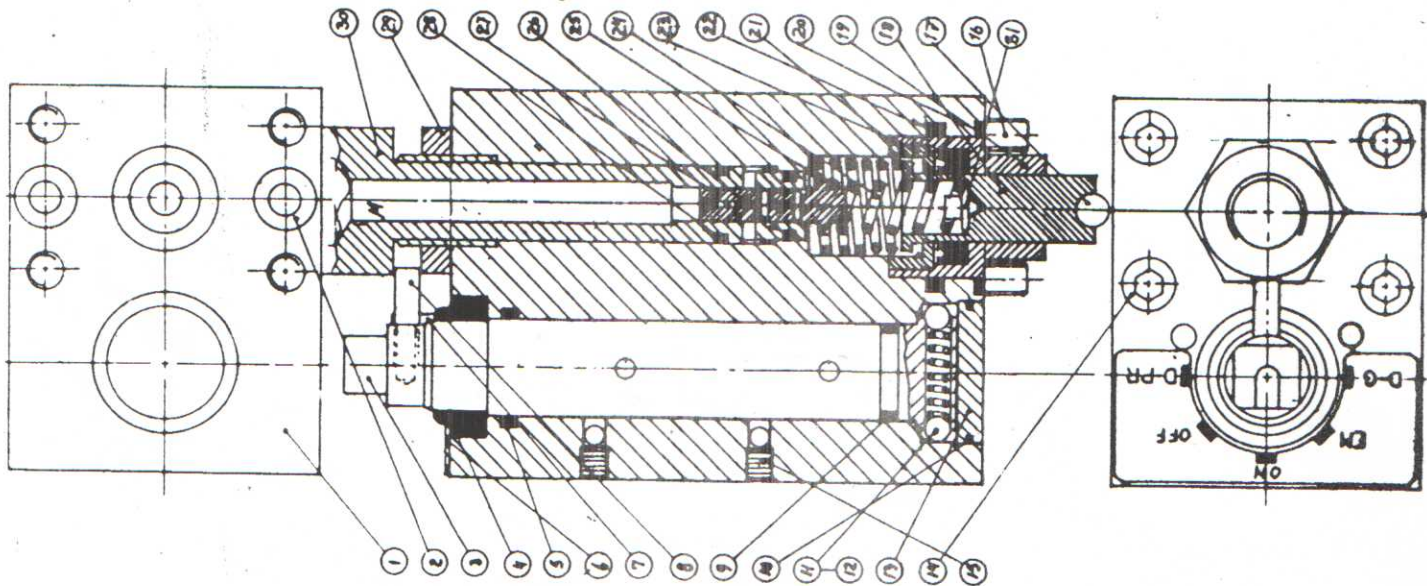
BNE

24	1	Cylinder	cast iron
23	1	Piston - rack	Cr. Ni. steel
22	1	Washer	Steel
21	1	Screw	Steel
20	1	O-seal	
19	1	Actuator body	Cast iron
18	1	Cam	Steel
17	1	Remote position indication	
16	2	O-seal	
15	2	O-seal	
14	1	O-seal	
13	1	O-seal	
12	1	O-seal	
11	1	O-seal	
10	1	Pinion	Cr. Ni. Mo. steel
9	1	Pin	Steel
8	1	Spindle	316 steel
7	1	O-seal	
6	1	O-seal	
5	1	O-seal	
4	1	Bushing	Brass
3	1	Bushing	Brass
2	1	Cylinder	Cast iron
1	8	Screw	Steel

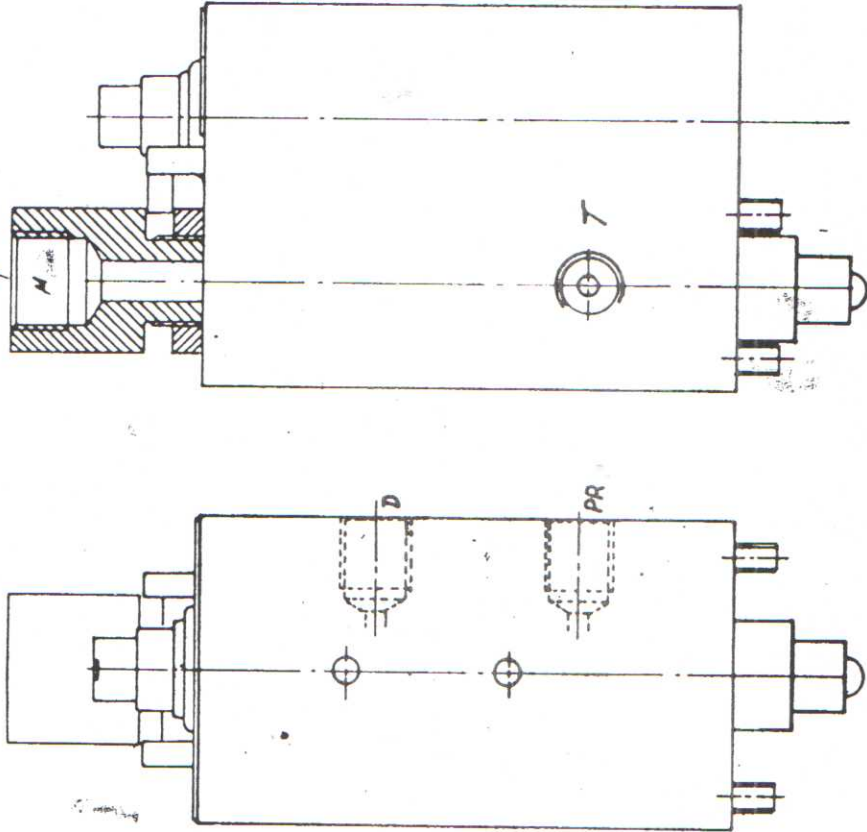


Actuator Type
 BNE

Actuator type	Q	b	C	d	e	f	g	h	j	k	L	M10	M8	n	h	Weight Kg
BNE 00.1/00.11	182	89		31	91	91	81	100	18	19	68	M8	M8	18	32.5	32.5
BNE 00.2/00.12	182	89		31	91	91	81	100	18	19	68	M8	M8	18	65	65
BNE 00.3/00.13	182	89		31	91	91	81	100	18	19	68	M8	M8	18	130	130
BNE 0.1/0.11	276	89		40	130	130	95	118	23	23	85	M10	M10	30	220	220
BNE 0.2/0.12	276	89		40	130	130	95	118	23	23	85	M10	M10	30	280	280
BNE 0.3/0.13	276	89		40	130	130	95	118	23	23	85	M10	M10	30	360	360
BNE 1.1/1.11	384	124		60	192	192	127	160	33	33	130	M16	M16	45	600	600
BNE 1.2/1.12	384	124		60	192	192	127	160	33	33	130	M16	M16	45	900	900
BNE 1.3/1.13	384	124		60	192	192	127	160	33	33	130	M16	M16	45	1250	1250



3/6 BSP
R=3/8"



60 b. Melde-Ring PR → P
120 b. Melde-Ring G → P
Intern spring til cyl.



Comb. bleed- and pressure
reducing valve,
Druckregel- und
Entlastungsventil.
No. 10.01.83 D-12.909A

31	Spring Centre
30	Feder Nippel
29	Nut
28	Mutter
27	O-Seal
26	Ring
25	Schieber
24	O-Seal
23	Spring
22	Feder
21	4-seal
20	4-Manchette
19	O-Ring
18	Seal
17	Ring
16	O-Ring
15	Nippel
14	Thrust Nipple
13	Druck Nippel
12	Ball
11	Kugel
10	Screw
9	Expander
8	Expander
7	Screw
6	Schraube
5	Cover
4	Deckel
3	Spring
2	Feder
1	Ball
	Kugel
	O-Seal
	O-Ring
	O-Ring
	Screw
	Schraube
	Pin
	Plan-Plate
	Funktion Schild
	O-Seal
	O-Ring
	Wapper Seal
	Abstreifer
	Spindel
	O-Seal
	O-Ring
	Gosly
	Flans