



Danfoss RO-Solutions - Global price list

Valid from: 1.January 2019 vol 1




| | TEXT | TYPE | REMARKS | CODE NO. |
|--|---|------------------------|-------------|----------|
| Couplings and couplings kits | | | | |
|  | Couplings | | | |
| | APP0.6 - APP3.5 Coupling | Dentex 24H7-16H7 | IEC 90 | 180Z0242 |
| | APP0.6 - APP3.5 Coupling | Softex (Alu) 28H7-16H7 | IEC 100/112 | 180Z0243 |
| | APP0.6 - APP3.5 Coupling | Softex (Alu) 38H7-16H7 | IEC 132 | 180Z0244 |
| | APP 3.0 - APP3.5 Coupling | Softex (Alu) 42H7-16H7 | IEC 160 | 180Z0276 |
| | APP5.1 - 10.2 / 11 - 13 Coupling | Softex (Alu) 38H7-32H7 | IEC 132 | 180Z0245 |
| | APP5.1 - 10.2 / 11 - 13 Coupling | Softex 42H7-32H7 | IEC 160 | 180Z0246 |
| | APP5.1 - 10.2 / 11 - 13 Coupling | Softex 48H7-32H7 | IEC 180 | 180Z0247 |
| | APP5.1 - 10.2 / 11 - 13 Coupling | Softex 55H7-32H7 | IEC 200 | 180Z0248 |
| | APP11 - 13 Coupling | Softex 60H7-32H7 | IEC 225 | 180Z0254 |
| | APP16 - 22 / 21 - 38, APP W HC 15 - 30 Coupling | Softex 60H7-40H7 | IEC 225 | 180Z0268 |
| | APP16 - 22 / 21 - 38, APP W HC 15 - 30 Coupling | Softex 65H7-40H7 | IEC 250 | 180Z0269 |
| | APP16 - 22 / 21 - 38, APP W HC 15 - 30 Coupling | Softex 75H7-40H7 | IEC 280 | 180Z0270 |
| | APP30 - 46, APP W HC 15 - 30 Coupling | Softex 80H7-40H7 | IEC 315 | 180Z0271 |
| | APP53 - 92 Coupling | BoWex 80 75H7-50H7 | IEC 280 | 180Z4081 |
| | APP53 - 86 Coupling | BoWex 100 80H7-50H7 | IEC 315 | 180Z4066 |
| | Gear ring for Couplings | | | |
|  | Spider (5 pcs.) | Shore 92 Red | IEC 132 | 180B4534 |
| | Spider (5 pcs.) | Shore 98 Red | IEC 160 | 180B4535 |
| | Spider (5 pcs.) | Shore 98 Red | IEC 180/200 | 180B4536 |
| | Spider (5 pcs.) | Shore 98 Red | IEC 225 | 180B4537 |
| | Spider (5 pcs.) | Shore 98 Red | IEC 250 | 180B4538 |
| | Spider (5 pcs.) | Shore 95 Red | IEC 280 | 180B4539 |
| | Spider (5 pcs.) | Shore 95 Red | IEC 315 | 180B4540 |
| | BoWex Spider (1 pc) | Elastor 80 Shore T50 | IEC 280 | 180Z4084 |
| | BoWex Spider (1 pc) | Elastor 100 Shore T50 | IEC 315 | 180Z4080 |

Danfoss RO-Solutions - Global price list

Valid from: 1.January 2019 vol 1



| | TEXT | TYPE | REMARKS | CODE NO. | |
|--|--|--------------------------------------|---|---------------|----------|
|  | Filter /House | | | | |
| | 20" Filter House 3/4" conn. | None transparent for OD 2.75" cartr. | Polypropylene | 180Z0213 | |
| | 20" Filter House Big blue 1½" conn. | None transparent for OD 4.5" cartr. | Polypropylene | 180Z0082 | |
| | 40" Filter House 3" vic. Conn. | None transparent for OD 6" cartr. | Fiberglass | 180Z0651 | |
| | Filter spanner | 20" Standard housing | | 180N0785 | |
| | Filter spanner | 20" Big blue housing | | 180N1438 | |
| | Legs for 40" Filter House | For Vertical mounting of 40" Housing | AISI 316 | 180Z0652 | |
| | Pre-Filter | | | | |
| | Pre-Filter Cartridge, max 1,8 m³/h | Melt blown | 20", 3µ nominal OD2.5" (Minimum order 10 pcs) | Polypropylene | 180Z0396 |
| | Pre-Filter Cartridge, max 5,1 m³/h | Melt blown | 20" 3µ nominal, OD4,5" | Polypropylene | 180Z0081 |
| | Filters | | | | |
| | Filter Cartridge, max 3,6 m³/h | | 20" 10µ absolute, OD2.75", Beta 5000 Pleated | Polypropylene | 180Z0006 |
| | Filter Cartridge, max 10,2 m³/h (no adapter needed) | | 20" 10µ absolute, OD4,5", Beta 5000 Pleated | Polypropylene | 180Z0285 |
| | Filter Cartridge, max 60 m³/h | | 40" 10µ absolute, OD 6" Beta 5000 Pleated | Polypropylene | 180Z0653 |
| | Base Frames | | | | |
| | Base Frame IEC 315 for 110-200kW, Horizontal w. vibr.dampers | | SWP 53-86 | Galv. Steel | 180Z0661 |
| | Motor Brackets | | | | |
| | IEC 280 - 315 for APP 21 - 46 | | 2 Brackets incl 4 Vibration dampers | Galv. Steel | 180Z4078 |
| | Assembly charges for motor/pump units | | | | |
| | Assembly + packaging | | SWP 0.6-3.5 | asp1 | |
| Assembly + packaging | | SWP 5.1-10.2 & 11 | asp2 | | |
| Assembly + packaging | | SWP 13 - 46 | asp3 | | |
| Assembly + packaging | | SWP 53-86 | asp4 | | |



Danfoss RO-Solutions - Global price list

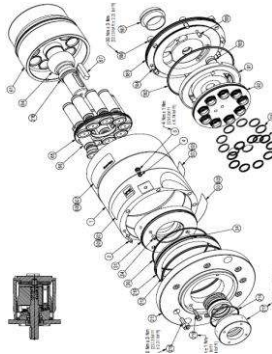
Valid from: 1.January 2019 vol 1




| TEXT | TYPE | REMARKS | CODE NO. |
|------|------|---------|----------|
|------|------|---------|----------|

Spare part kits for APP, APM & APP W HC

| APP0.6 - 3.5 / APM 0.8 - 2.9 | | | |
|--|------------------------------------|--------------|----------|
| APP 0.6 - 1.0 Compact | Pump Service Tool kit | | 180B4188 |
| APP 0.6 - 1.0 & APM 0.8 - 1.2 | Pump Service Tool kit | | 180B4142 |
| APP 1.5 - 3.5 & APM 1.8 - 2.9 | Pump Service Tool kit | | 180B4148 |
| APP 0.6 - 1.0 Compact | Sealing kit include Flushing valve | | 180B4187 |
| APP 0.6 - 1.0 & APM 0.8 - 1.2 | Sealing kit include Flushing valve | | 180B4141 |
| APP 1.5 - 2.5 & APM 1.8 - 2.9 | Sealing/Screw and shaft seal set | | 180B4147 |
| APP 3.0 - 3.5 | Sealing/Screw and shaft seal set | | 180B4153 |
| APP 0.6 - 1.0 Compact | Pistons (5pc) | Super Duplex | 180B4181 |
| APP 0.6 - 1.0 & APM 0.8 - 1.2 | Pistons (5pc) | Super Duplex | 180B4137 |
| APP 1.5 - 2.5 & APM 1.8 - 2.9 | Pistons (5pc) | Super Duplex | 180B4143 |
| APP 3.0 - 3.5 | Pistons (7pc) | Super Duplex | 180B4149 |
| APP 0.6 - 1.0 Compact | Retainer kit | Super Duplex | 180B4182 |
| APP 0.6 - 1.0 & APM 0.8 - 1.2 | Retainer kit | Super Duplex | 180B4138 |
| APP 1.5 - 1.8 & APM 1.8 - 2.0 | Retainer kit | Super Duplex | 180B4177 |
| APP 2.2 - 2.5 & APM 2.5 - 2.9 | Retainer kit | Super Duplex | 180B4144 |
| APP 3.0 - 3.5 | Retainer kit | Super Duplex | 180B4150 |
| APP 0.6 - 1.0 & Compact version, Flush valve kit included. in seal kit | Flush valve kit | Super Duplex | |
| APP 1.5 - 3.5 | Flush valve kit | Super Duplex | 180B4136 |
| APP 0.6 - 1.0 Compact | valve plate kit | Super Duplex | 180B4183 |
| APP 0.6 - 1.0 | valve plate kit | Super Duplex | 180B4139 |
| APP 1.5 - 2.5 | valve plate kit | Super Duplex | 180B4145 |
| APP 3.0 - 3.5 | valve plate kit | Super Duplex | 180B4151 |
| APM 0.8 - 1.2 | valve plate kit | Super Duplex | 180F4100 |
| APM 1.8 - 2.9 | valve plate kit | Super Duplex | 180F4007 |
| APP 0.6 - 1.0 Compact | Service kit Cylinder barrel | Super Duplex | 180B4186 |
| APP 0.6 - 1.0 & APM 0.8 - 1.2 | Service kit Cylinder barrel | Super Duplex | 180B4140 |
| APP 1.5 - 2.5 & APM 1.8 - 2.9 | Service kit Cylinder barrel | Super Duplex | 180B4146 |
| APP 3.0 - 3.5 | Service kit Cylinder barrel | Super Duplex | 180B4152 |
| APP 0.8 Compact | Swash plate kit | Super Duplex | 180B4189 |
| APP 3.0 | Swash plate kit | Super Duplex | 180B4134 |
| APP 3.5 | Swash plate kit | Super Duplex | 180B4135 |



| Danfoss RO-Solutions - Global price list | | | |  |
|--|----------------------|----------------------------------|------------------------|---|
| Valid from: 1.January 2019 vol 1 | | | | |
| | TEXT | TYPE | REMARKS | CODE NO. |
| Spare part kits for APP, APM & APP W HC | | | | |
| | APP5.1 - 10.2 | | | |
| | APP 5.1 - 10.2 | Pump Service Tool kit | | 180B4162 |
| | APP 5.1 - 10.2 | Sealing/Screw and shaft seal set | | 180B4161 |
| | APP 5.1 - 8.2 | Pistons (9pc) | Super Duplex | 180B4154 |
| | APP 10.2 | Pistons (9pc) | Super Duplex | 180B4155 |
| | APP 5.1 - 8.2 | Retainer kit | Super Duplex | 180B4156 |
| | APPW 5.1 - 8.2 | Retainer kit | Super Duplex / coating | 180B4086 |
| | APP 10.2 | Retainer kit | Super Duplex | 180B4157 |
| | APPW 10.2 | Retainer kit | Super Duplex / coating | 180B4087 |
| | APP 5.1 - 8.2 | valve plate kit | Super Duplex | 180B4158 |
| | APP 10.2 | valve plate kit | Super Duplex | 180B4159 |
| | APP 5.1 - 10.2 | Service kit Cylinder barrel | Super Duplex | 180B4160 |
| | APP 5.1 | Swash plate kit | Super Duplex | 180B4129 |
| | APP 6.5 | Swash plate kit | Super Duplex | 180B4130 |
| | APP 7.2 | Swash plate kit | Super Duplex | 180B4131 |
| | APP 8.2 | Swash plate kit | Super Duplex | 180B4132 |
| | APP 10.2 | Swash plate kit | Super Duplex | 180B4133 |
| | APP 5.1 - 10.2 | Port Flange kit | Super Duplex | 180B4316 |

Danfoss RO-Solutions - Global price list

Valid from: 1.January 2019 vol 1




| | TEXT | TYPE | REMARKS | CODE NO. |
|--|----------------------------|----------------------------------|--------------|----------|
| Spare part kits for APP, APM & APP W HC | | | | |
| APP11-3 & 16-22 | | | | |
| | APP 11-13 | Pump Service Tool kit | | 180B4230 |
| | APP 16-19 & APP 22 | Pump Service Tool kit | | 180B4222 |
| | APP 11-13 | Sealing/Screw and shaft seal set | | 180B4229 |
| | APP 16-19 & APP 22 | Sealing/Screw and shaft seal set | | 180B4206 |
| | APP 11-13 & 16-19 | Pistons (7pc) | Super Duplex | 180B4221 |
| | APP 22 | Pistons (7pc) | Super Duplex | 180B4200 |
| | APP 11-13 & 16-19 & APP 22 | Retainer kit | Super Duplex | 180B4201 |
| | APP 11-13 | Flush valve kit | Super Duplex | 180B4227 |
| | APP 16-19 & APP 22 | Flush valve kit | Super Duplex | 180B4203 |
| | APP 11-13 & 16-19 & APP 22 | valve plate kit | Super Duplex | 180B4204 |
| | APP 11 - 13 | Service kit Cylinder barrel | Super Duplex | 180B4228 |
| | APP 16-19 & APP 22 | Service kit Cylinder barrel | Super Duplex | 180B4205 |
| | APP 11/1200 & APP 13/1500 | Swash plate kit | Super Duplex | 180B4223 |
| | APP 11 /1500 | Swash plate kit | Super Duplex | 180B4226 |
| | APP 13/1200 & APP 17/1500 | Swash plate kit | Super Duplex | 180B4216 |
| | APP 16/1200 | Swash plate kit | Super Duplex | 180B4219 |
| | APP 16/1500 | Swash plate kit | Super Duplex | 180B4215 |
| | APP 17/1200 & APP 22/1500 | Swash plate kit | Super Duplex | 180B4218 |
| | APP 19/1200 | Swash plate kit | Super Duplex | 180B4220 |
| | APP 19/1500 | Swash plate kit | Super Duplex | 180B4217 |
| | APP 22/1200 | Swash plate kit | Super Duplex | 180B4202 |
| | APP 11 - 13 | Port Flange kit | Super Duplex | 180B4568 |
| | APP 16-19 & APP 22 | Port Flange kit | Super Duplex | 180B4569 |

Danfoss RO-Solutions - Global price list

Valid from: 1.January 2019 vol 1



| | TEXT | TYPE | REMARKS | CODE NO. |
|--|------------------------------|-----------------------------|--------------|----------|
| Spare part kits for APP, APM & APP W HC | | | | |
| APP21-46 | | | | |
| | APP 21 - 46 & APP W HC 15-30 | Pump Service Tool kit | | 180B4172 |
| | APP 21-46 | Seal set excl shaft seal | NBR | 180B4632 |
| | APP 21-46 | Screw set | - | 180B4630 |
| | APP 21-46 | Shaft seal kit | Hastelloy | 180B4631 |
| | APP 21 - 24 & APP 26/1200 | Pistons (9pc) | Super Duplex | 180B4163 |
| | APP 26/1500 & APP30 - 46 | Pistons (9 pc) | Super Duplex | 180B4199 |
| | APP 21 - 26 & APP 30/1500 | Retainer kit | Super Duplex | 180B4164 |
| | APP 30/1200 & APP38 | Retainer kit | Super Duplex | 180B4179 |
| | APP 46 | Retainer kit | Super Duplex | 180B4383 |
| | APP 21 - 46 & APP W HC 15-30 | Flush valve kit | Super Duplex | 180B4170 |
| | APP 21 - 26 | valve plate kit | Super Duplex | 180B4165 |
| | APP 30 & 38 - 46 | valve plate kit | Super Duplex | 180B4180 |
| | APP 21 - 46 | Service kit Cylinder barrel | Super Duplex | 180B4166 |
| | APP 21/1200 & APP 26/1500 | Swash plate kit | Super Duplex | 180B4167 |
| | APP 21/ 1500 | Swash plate kit | Super Duplex | 180B4077 |
| | APP 24/1200 & APP30/1500 | Swash plate kit | Super Duplex | 180B4168 |
| | APP 24/1500 | Swash plate kit | Super Duplex | 180B4224 |
| | APP 26/1200 | Swash plate kit | Super Duplex | 180B4169 |
| | APP 30/1200 & APP38 - 46 | Swash plate kit | Super Duplex | 180B4178 |
| | APP 21 - 46 & APP W HC 15-30 | Port flange kit | Super Duplex | 180B4633 |

| Danfoss RO-Solutions - Global price list | | | |  |
|--|------------------------------|-----------------------------|--------------|---|
| Valid from: 1.January 2019 vol 1 | | | | |
| | TEXT | TYPE | REMARKS | CODE NO. |
| Spare part kits for APP, APM & APP W HC | | | | |
| | APP W HC 15-30 | | | |
| | APP 21 - 46 & APP W HC 15-30 | Pump Service Tool kit | | 180B4172 |
| | APP W HC 15-30 | Seal set excl shaft seal | NBR | 180B4638 |
| | APP W HC 15 - 30 | Screw set | - | 180B4637 |
| | APP W HC 15-30 | Shaft seal kit | Hastelloy | 180B4638 |
| | APP W HC 15-30 | Pistons (9pc) | Super Duplex | 180B4644 |
| | APP W HC 15-24 | Retainer kit | Super Duplex | 180B4643 |
| | APP W HC 30 | Retainer kit | Super Duplex | 180B4647 |
| | APP 21 - 46 & APP W HC 15-30 | Flush valve kit | Super Duplex | 180B4170 |
| | APP W HC 15 | Valve plate kit | Super Duplex | 180B4641 |
| | APP W HC 21-24 | Valve plate kit | Super Duplex | 180B4642 |
| | APP W HC 30 | Valve plate kit | Super Duplex | 180B4646 |
| | APP W HC 15-30 | Service kit Cylinder barrel | Super Duplex | 180B4640 |
| | APP W HC 15-24 | Swash plate kit | Super Duplex | 180B4645 |
| | APP W HC 30 | Swash plate kit | Super Duplex | 180B4648 |
| | APP 21 - 46 & APP W HC 15-30 | Port flange kit | Super Duplex | 180B4633 |

Danfoss RO-Solutions - Global price list

Valid from: 1.January 2019 vol 1



| | TEXT | TYPE | REMARKS | CODE NO. |
|--|-------------------------------------|-------------------------------------|--------------|------------|
| Spare part kits for APP, APM & APP W HC | | | | |
| | APP 53-92 | | | |
| | APP 53 - 92 | Pump Service Tool kit | | 180Z0665 |
| | APP 53 - 86 upto version 06 | Sealing/Screw and shaft seal set | | 180B4552 |
| | APP 53 - 92 Serial no. 07 or higher | Seal set excl shaft seal | NBR | 180B4636 |
| | APP 53 - 92 Serial no. 07 or higher | Screw set | - | 180B4634 |
| | APP 53 - 92 Serial no. 07 or higher | Shaft seal kit | Hastelloy | 180B4635 |
| | APP 53 | Pistons (18 pc) | Super Duplex | 180B4553 |
| | APP 65 - 92 | Pistons (18 pc) | Super Duplex | 180B4554 |
| | APP 53 - 65/1500 | Retainer kit with spring cartrigdes | Super Duplex | 180B4555 |
| | APP 78/1500 | Retainer kit with spring cartrigdes | Super Duplex | 180B4566 |
| | APP 86/1700 & 92/1780 | Retainer kit with spring cartrigdes | Super Duplex | 180B4562 |
| | APP 53 - 92 | Flush valve kit | Super Duplex | 180B4556 |
| | APP 53 - 65 | valve plate kit | Super Duplex | 180B4557 |
| | APP 78 - 86 | valve plate kit | Super Duplex | 180B4558 |
| | APP 92 | valve plate kit | Super Duplex | On Request |
| | APP 53 - 92 | Service kit Cylinder barrel | Super Duplex | 180B4559 |
| | APP 53 | Swash plate kit | Super Duplex | 180B4560 |
| | APP 65 | Swash plate kit | Super Duplex | 180B4601 |
| | APP 78 - 86 | Swash plate kit | Super Duplex | 180B4561 |
| | APP 92 | Swash plate kit | Super Duplex | On Request |
| | APP 53 - 86 | Port Flange kit | Super Duplex | 180B4565 |
| | APP 92 | Port Flange kit | Super Duplex | On Request |

Danfoss RO-Solutions - Global price list

Valid from: 1.January 2019 vol 1







| | TEXT | TYPE | REMARKS | CODE NO. |
|-------------------------------------|---|--|---------|----------|
| iSave Energy Recovery Device | | | | |
| | iSave21 Plus, incl. Pressure exchanger and booster pump | with 5,5kW-4 p el.motor and Base Frame | | 180F7016 |
| | iSave21 Plus, incl. Pressure exchanger and booster pump | with 7,5kW-4 p IE3 el.motor and Base Frame | | 180F7017 |
| | iSave21 Plus, incl. Pressure exchanger and booster pump | (without motor) | | 180F7015 |
| | iSave40, incl. Press. exchanger and booster pump | with 11kW-6 p el.motor and Base Frame Horizontal | | 180F7001 |
| | iSave40, incl. Press. exchanger and booster pump | with 11kW-6 p el.motor and Base Frame Vertical | | 180F7003 |
| | iSave40, incl. Press. exchanger and booster pump | with 15kW-6 p el.motor and Base Frame Horizontal | | 180F7004 |
| | iSave40, incl. Press. exchanger and booster pump | with 15kW-6 p el.motor and Base Frame Vertical | | 180F7005 |
| | iSave40, incl. Pressure exchanger and booster pump | (without motor) | | 180F7011 |
| | iSave50, incl. Press. exchanger and booster pump | with 18,5kW-6 p el.motor IE3 and Base Frame Vertical | | 180F7038 |
| | iSave50, incl. Press. exchanger and booster pump | with 18,5kW-6 p el.motor IE3 and Base Frame Horizontal | | 180F7023 |
| | iSave50, incl. Pressure exchanger and booster pump | (without motor) | | 180F7020 |
| | iSave70, incl. Press. exchanger and booster pump | with 18,5kW-6 p el.motor IE3 and Base Frame Vertical | | 180F7040 |
| | iSave70, incl. Press. exchanger and booster pump | with 18,5kW-6 p el.motor IE3 and Base Frame Horizontal | | 180F7025 |
| | iSave70, incl. Pressure exchanger and booster pump | (without motor) | | 180F7021 |

Danfoss RO-Solutions - Global price list

Valid from: 1.January 2019 vol 1



| TEXT | TYPE | REMARKS | CODE NO. | |
|---|---|--|-----------------------|----------|
| Accessories iSave Energy Recovery Devices | | | | |
| Coupling Kits (bell house and coupling) | | | | |
|  | iSave 21 Coupling kit | Alu Housing, Softex coupling | 5,5/7,5kW ø200 Flange | 180Z0286 |
| | iSave 40 Bell housing | Alu Housing, Red | 11/15kW ø350 Flange | 180Z0290 |
| | iSave 50 - 70 Coupling kit | Alu Housing, Softex coupling | 18,5kW ø400 Flange | 180Z4003 |
| Couplings | | | | |
| | iSave 21 Coupling | Softex (Alu) 38H7-16H7 | IEC 132 | 180Z0244 |
| | iSave 40 Coupling 11kW 6 pol | Softex 42H7-32H7 | IEC 160 | 180Z0246 |
| | iSave 40 Coupling 15kW 6 pol | Softex 48H7-32H7 | IEC 180 | 180Z0643 |
| | iSave 50-70 Coupling 18,5kW 6 pol | Softex 55H7-32H7 | IEC 200 | 180Z0248 |
| Electrical motors | | | | |
|  | Electrical Motors IEC 132 | 132S-4, 4-pole, B3B14 C200 3x400V/50Hz IE3 Alu | 5,5 kW | 180Z0504 |
| | Electrical Motors IEC 132 | 132M-4, 4-pole, B3B14 C200 3x400V/50Hz IE3 Alu | 7,5 kW | 180Z4063 |
| | Electrical Motors IEC 160 | 160L-6, 6 pole, B3B5 3x400V/50Hz IE2 Alu | 11 kW | 180Z0505 |
| | Electrical Motors IEC 160 | 180L-6, 6 pole, B3B5 3x400V/50Hz IE2 | 15 kW | 180Z0507 |
| | Electrical Motors IEC 200 | 200L1-6, 6 pole, B3B5 3x400V/50Hz IE3 | 18,5 kW | 180Z0530 |
| Hoses with Victaulic connections | | | | |
|  | High pressure hose 2" 1,25m/49" | 2" victaulic connections, iSave 21 | Super Duplex | 180Z0140 |
| | Low pressure hose kit 2", 2,00m/79" 10 bar | 2" victaulic connections, iSave 21 | Super Duplex | 180Z0298 |
| | Low pressure hose kit 3" 2,00m/79" 10 bar | 3" victaulic connections, iSave40, 50-70 | Super Duplex | 180Z0144 |
| | High pressure hose 3" 1,0m/39,4" 80 bar | 3" victaulic connections iSave40, 50-70 | Super Duplex | 180Z0611 |
| | High pressure hose 3" 1,25m/49" 80 bar | 3" victaulic connections iSave40, 50-70 | Super Duplex | 180Z1000 |
| | High pressure hose 3" 1,6m/63" 80 bar | 3" victaulic connections iSave40, 50-70 | Super Duplex | 180Z1001 |
| | High pressure hose 3" 1,79m/70" 80 bar | 3" victaulic connections iSave40, 50-70 | Super Duplex | 180Z0612 |
| Base plates | | | | |
| | iSave 21 Base plate kit iSave 21 Plus IEC for 5,5kW | Horizontal | | 180Z0609 |
| | iSave 21 plus Base plate kit IEC/NEMA for 7,5kW(IEC132M) & 10HP (215TC) | Horizontal | | 180Z4060 |
| | iSave 21 plus Base plate kit NEMA for 15HP (254TC) | Horizontal | | 180Z4064 |
| | iSave 21 plus support plate kit, | Upgrade of old base frame to new base plate | | 180Z4062 |
| | iSave 40 Base plate kit IEC | Horizontal | | 180Z0607 |
| | iSave 40 Base plate kit IEC/NEMA | Horizontal | | 180Z4002 |
| | iSave 40 Base plate kit | Vertical | | 180Z0608 |
| | iSave 50-70 Base plate | Vertical | | 180Z4025 |
| | iSave 50-70 Base plate | Horizontal | | 180Z4007 |

| Danfoss RO-Solutions - Global price list | | | |  |
|--|--|---|--------------|---|
| Valid from: 1.January 2019 vol 1 | | | | |
| | TEXT | TYPE | REMARKS | CODE NO. |
| Spare part kits iSave Energy Recovery Devices | | | | |
| | Tool kit | | | |
| | iSave 21 Tool kit | For service of iSave 21 and iSave 21 upgrade | | 180F4126 |
| | iSave 21 Plus Tool kit | For service of iSave 21 Plus | | 180F4160 |
| | iSave 40 Tool kit | For service of iSave 40 | | 180F4112 |
| | iSave 50-70 Tool kit | For service of iSave 50-70 | | 180F4140 |
| | Spare part kits iSave 21 | | | |
| | iSave 21 | Valve plate kit (2 pcs) | Super Duplex | 180F4101 |
| | iSave 21 | Port plate Brine (1 pc) | | 180F4102 |
| | iSave 21 | Port plate Sea Water (1 pc) | | 180F4103 |
| | iSave 21 | High Pressure bearing | | 180F4104 |
| | iSave 21 | Seal kit | | 180F4105 |
| | iSave 21 | Vane kit (8 pcs) | | 180F4162 |
| | iSave 21 | Side plate kit (2 pcs) | | 180F4108 |
| | iSave 21 | Coupling kit, internal | Super Duplex | 180F4106 |
| | iSave 21 | Cylinder barrel kit (cyl.barrel, seal set, int.coupl, HP bearing) | Super Duplex | 180F4124 |
| | iSave 21 Upgrade kit | Vane Pump upgrade kit | | 180F4161 |
| | Spare part kits iSave 21 upgraded | | | |
| | iSave 21 | Valve plate kit (2 pcs) | Super Duplex | 180F4101 |
| | iSave 21 | Port plate Brine (1 pc) | | 180F4102 |
| | iSave 21 | Port plate Sea Water (1 pc) | | 180F4103 |
| | iSave 21 | High Pressure bearing | | 180F4104 |
| | iSave 21 | Seal kit | | 180F4105 |
| | iSave 21 | Vane kit (8 pcs) | | 180F4162 |
| | iSave 21 | Side plate kit (2 pcs) | | 180F4158 |
| | iSave 21 | Coupling kit, internal | Super Duplex | 180F4106 |
| | iSave 21 | Cylinder barrel kit (cyl.barrel, seal set, int.coupl, HP bearing) | Super Duplex | 180F4124 |

Danfoss RO-Solutions - Global price list

Valid from: 1.January 2019 vol 1



| TEXT | TYPE | REMARKS | CODE NO. |
|------|------|---------|----------|
|------|------|---------|----------|

Spare part kits iSave Energy Recovery Devices

Spare part kits iSave 21 Plus

| | | | |
|---------------|-----------------------------|--------------|----------|
| iSave 21 Plus | Valve plate kit (2 pcs) | Super Duplex | 180F4101 |
| iSave 21 Plus | Port plate Brine (1 pc) | | 180F4102 |
| iSave 21 Plus | Port plate Sea Water (1 pc) | | 180F4155 |
| iSave 21 Plus | High Pressure bearing | | 180F4156 |
| iSave 21 Plus | Seal kit | | 180F4157 |
| iSave 21 Plus | Vane kit (8 pcs) | | 180F4162 |
| iSave 21 Plus | Side plate kit (2 pcs) | | 180F4158 |
| iSave 21 Plus | Coupling kit, internal | Super Duplex | 180F4159 |

Spare part kits iSave 40

| | | | |
|----------|--|-------------------|----------|
| iSave 40 | Valve plate kit (2 pcs) Pressure exchanger | Super Duplex | 180F4114 |
| iSave 40 | Port plate Brine (1 pc) Pressure exchanger | Super Duplex PEEK | 180F4115 |
| iSave 40 | Port plate Sea Water (1 pc) Pressure exchanger | Super Duplex PEEK | 180F4116 |
| iSave 40 | Sealing kit Pressure exchanger | | 180F4117 |
| iSave 40 | Sealing kit Vane pump | | 180F4123 |
| iSave 40 | Vane kit (8 pcs) | Super Duplex PEEK | 180F4122 |
| iSave 40 | Port plate kit out, Vane pump | Super Duplex | 180F4118 |
| iSave 40 | Port plate kit in, Vane pump | Super Duplex | 180F4119 |
| iSave 40 | Sealing plate out, Vane pump | PEEK | 180F4120 |
| iSave 40 | Sealing plate in, Vane pump | PEEK | 180F4121 |
| iSave 40 | Coupling kit, internal | Super Duplex | 180F4125 |

Spare part kits iSave 50-70

| | | | |
|-------------|--|--|----------|
| iSave 50-70 | Screw & Seal kit | | 180F4132 |
| iSave 50-70 | Shaft seal kit | | 180F4133 |
| iSave 50-70 | Coupling kit internal | | 180F4134 |
| iSave 50 | Port plate kit Pressure exchanger iSave 50 | | 180F4135 |
| iSave 70 | Port plate kit Pressure exchanger iSave 70 | | 180F4136 |
| iSave 50-70 | Vane kit (8 pcs) | | 180F4137 |
| iSave 50-70 | Valve plate kit Pressure exchanger | | 180F4138 |
| iSave 50-70 | Rotor elements and sealing plates | | 180F4139 |