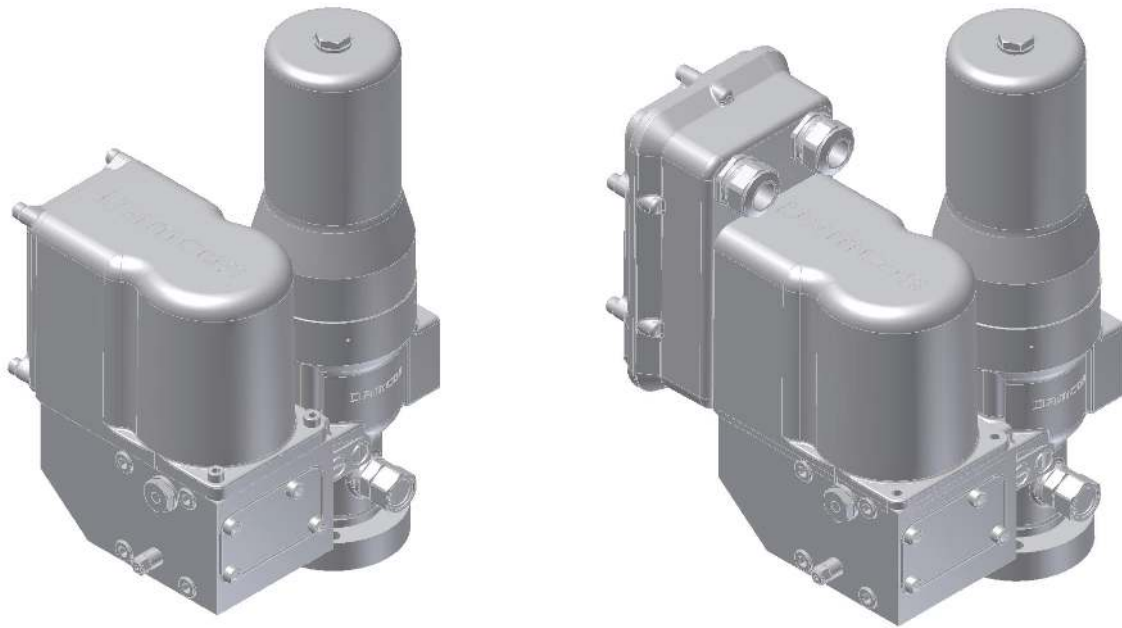


LPUM - Local Power Unit

General



Description

The LPUM - (Local Power Unit) - is an integrated electro-hydraulic system for remote control of valves and actuators.

The LPUM is especially developed for mounting direct on valve actuators, primarily on board ships.

The LPUM consists of a hydraulic pump which is driven by an asynchronous capacitor motor and several valve functions.

The LPUM's are basically in two different versions:

- LPUM-S for single-acting spring operated actuators (fail safe)
- LPUM-D for double-acting actuators (fail set)

Features

The LPUM:

- matches the actuators:
 - BRC 125, BRC 250, BRC 500
 - BRCF 125, BRCF 250, BRCF 500
 - KC 65, KC 125
 - KF 65, KF 125
 - KFR 125
- has no external position indicator cable
- easy de-airing and oil filling

Controls

The standard version of LPUM has no internal control. LPUM can be equipped with P-NET interface and thus controlled electrically.

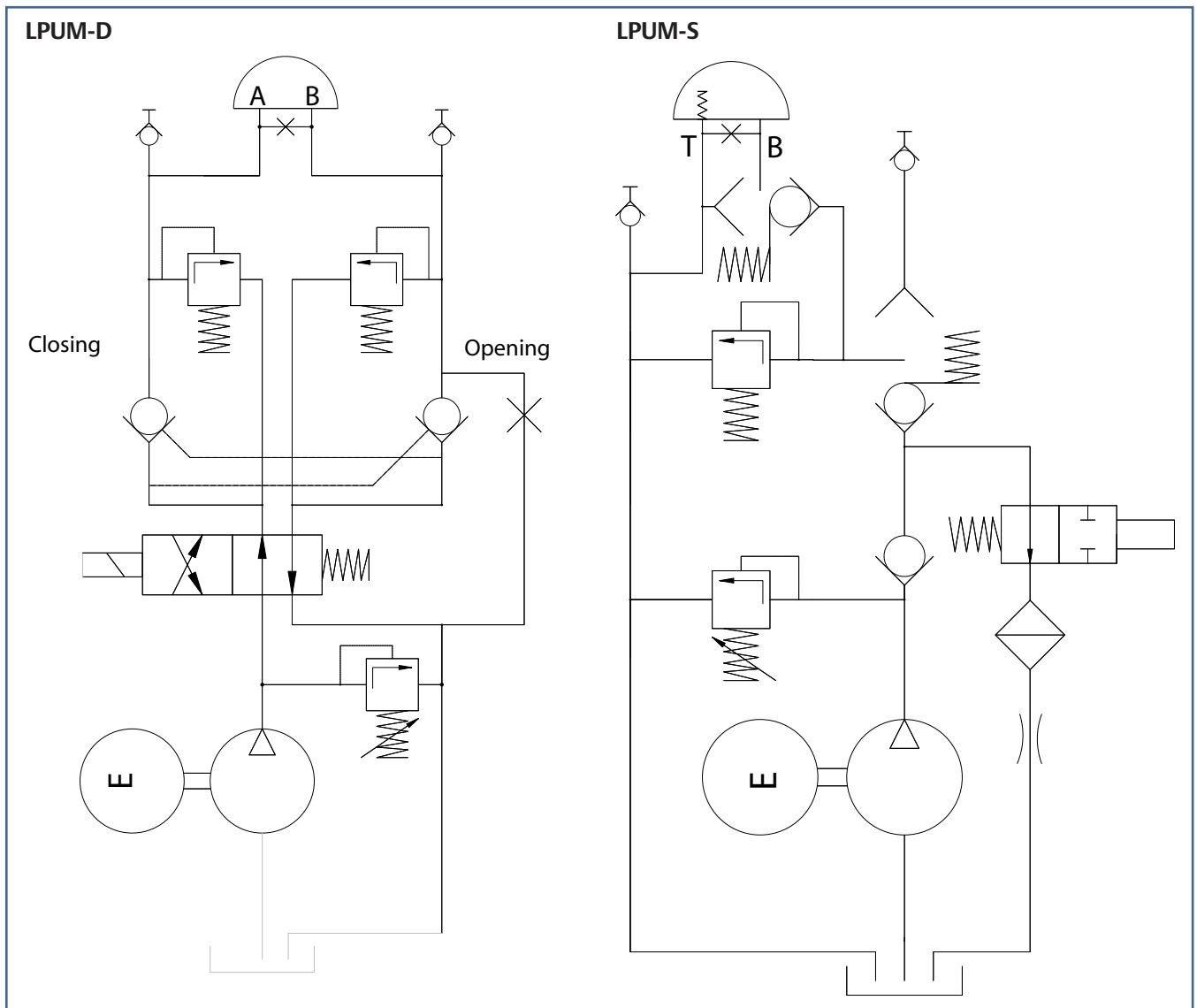
For further information about the control please see separate data sheets.

Position Indication Signal

The position indicator (DPI) is built into the pump block with internal wiring from position indicator to the terminal box.

For further information about the DPI position indicator please see separate data sheets.

Hydraulic Diagram for LPUM



Materials

Electrical housing, also for P-Net	Aluminium DS4261, AISI 12, anodized
Slides, etc.	Brass / steel
Screws, sign plate, rivets and bracket	Stainless steel
Seals	NBR/PTFE
Valve block	Al Mg Si1
Cable glands	Brass/Nickel

Hydraulic Specification

Operating speed

The operating duration can be calculated from the oil displacement of the actuator. The LPUM delivers a flow of 200 ml/min at 50 Hz.

Example: A BRC 250 can be opened in :

$$50 \text{ ml} / 200 \text{ ml} \times 60 \text{ sec.} = 15 \text{ sec.}$$

Note: Max. running time limited to approx.45 seconds.

Actuator type:	Oil displacement: ml	Operating time (sec.) open/dose for LPUM-D:		
		50 Hz	60 Hz	
BRC 125	26	8	6.7	
BRC 250	50	15	12.5	
BRC 500	100	30	25	
KC 65	21	6.3	5.3	
KC 125	82	25	20.5	
		Operating time (sec.) open for LPUM-S:		Closing time (sec.) 22-25 °C for LPUM-S*: 50/60 Hz
		50 Hz	60 Hz	
BRCF 125	26	9	7.5	3
BRCF 250	50	17	14.2	5
BRCF 500	100	30	25	10
KF 65	21	7	5.8	4
KF/KFR 125	82	28	23.3	12

* With standard orifice

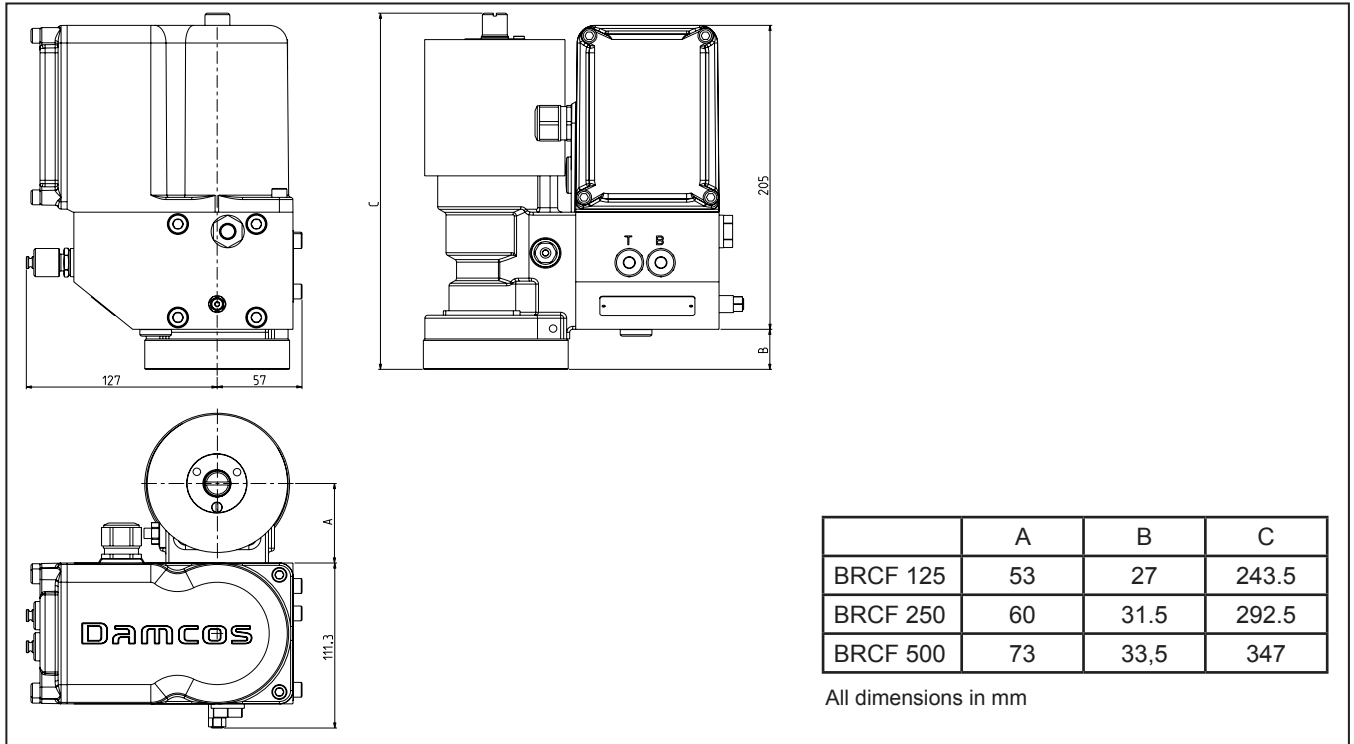
Working pressure	135 bar
Relief valve cracking pressure	150 bar
Safety valve pressure	210 ± 40 bar
Test pressure	225 bar
Ambient temperature	-5°C to 55°C
Tank volume/ utility volume	approx. 105 ml. / 35 ml.
Weight	7.5 kg

Electrical specification

Power supply	220-230 V AC 50 or 60 Hz
Starting current (220 V 50 Hz)	3.3A
Running current max. (220 V 50 Hz)	2.5A
Running current at 20°C (220 V 50 Hz)	2.2A
Max. running time	~ 45 sec. dependent on ambient temp. (max. 10% duty cycle)
Enclosure rating	IP 68, (3 bar in 24 hours)
The solenoid valve in -	
LPUM-S consumes approx.:	12 W corresponding to 0.07A
LPUM-D consumes approx.:	9 W corresponding to 0.07 A

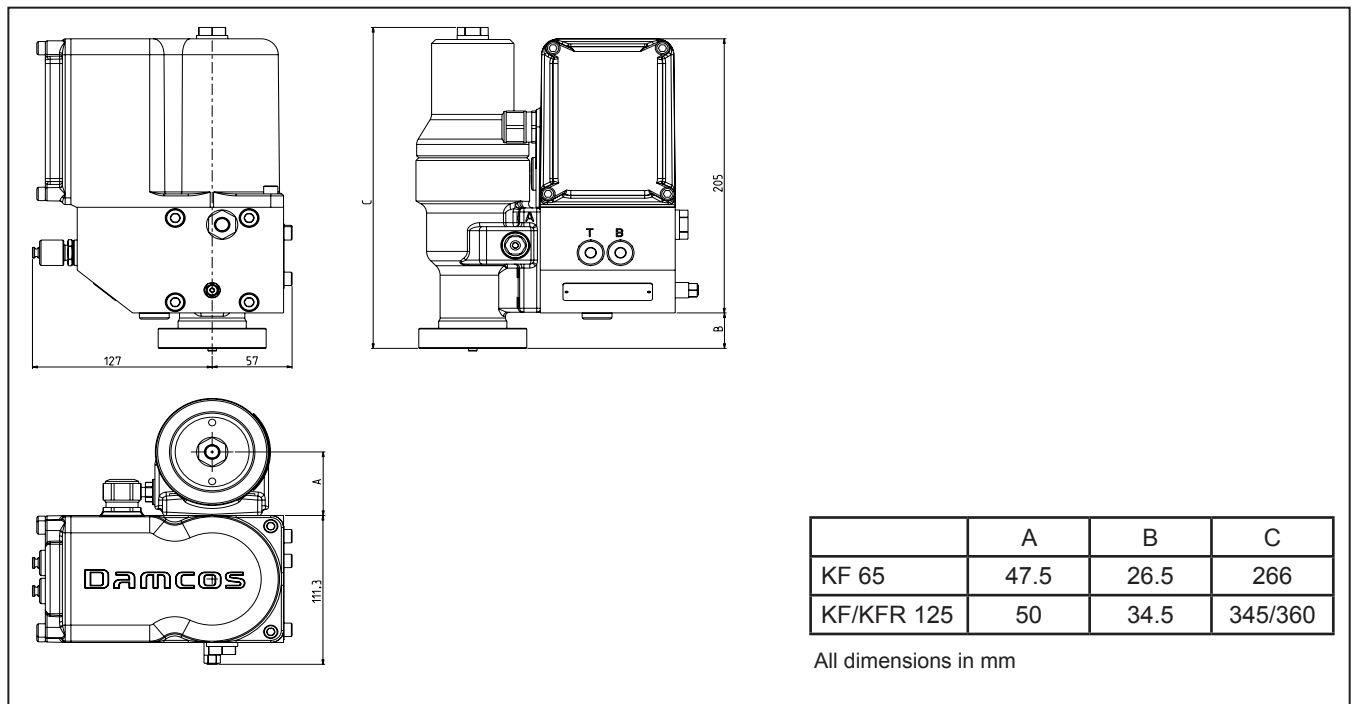
Dimensions LPUM-S on BRCF actuator

See also the dimensions for LPUM P-NET



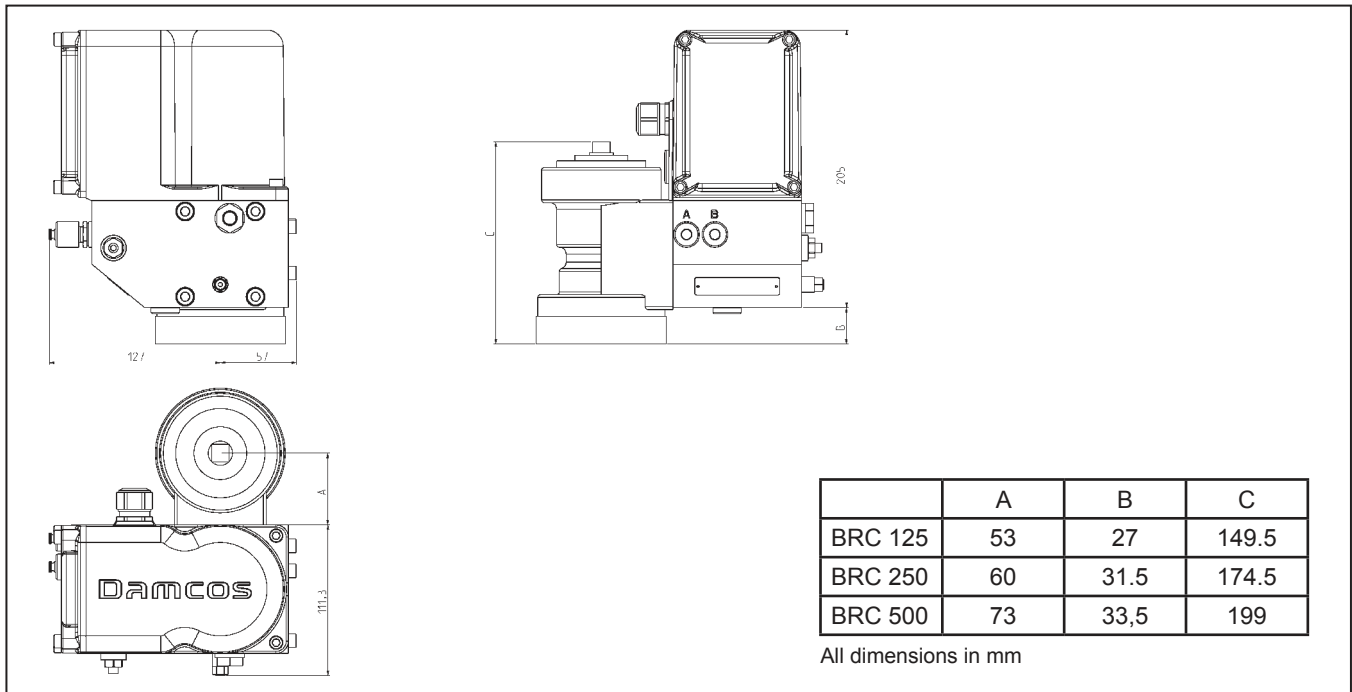
Dimensions LPUM-S on KF/KFR actuator

See also the dimensions for LPUM P-NET



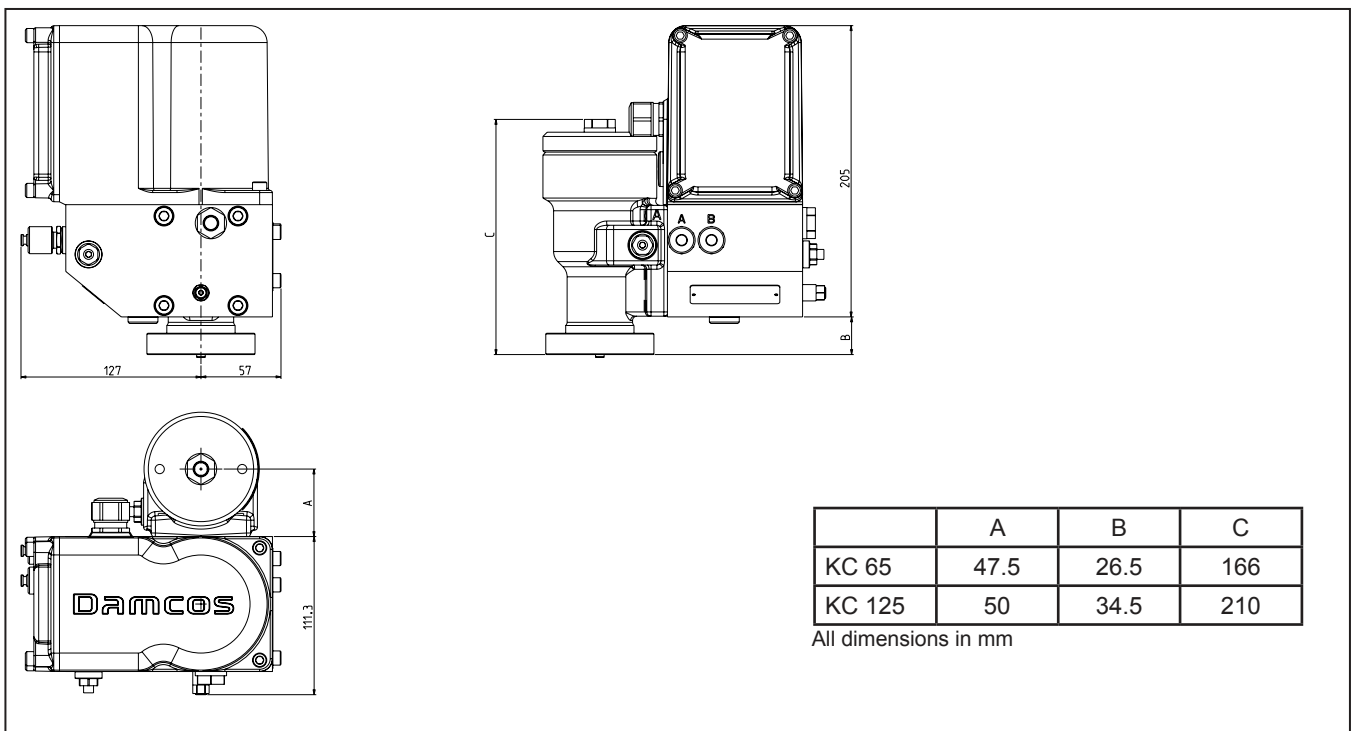
Dimensions LPUM-D on BRC actuator

See also the dimensions for LPUM P-NET



Dimensions LPUM-D on KC actuator

See also the dimension for LPUM P-NET



Cable Glands

Standard version

Cable glands	Standard: 1 pcs x M20 x 1.5 (8-15 mm cable). On request 2 pcs x M20 x 1.5 (8-15 mm cable).
--------------	--------------------------------------------------------------------------------------------

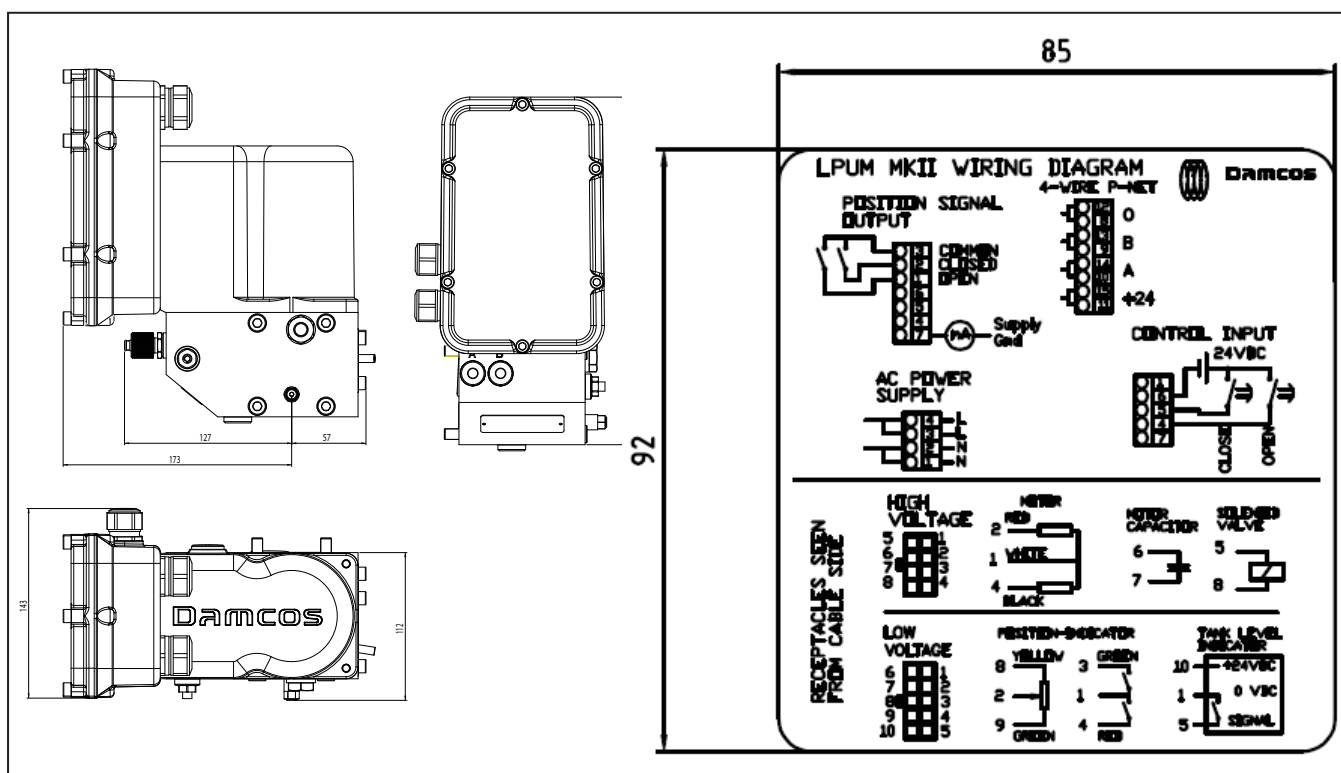
P-NET version

Application	Thread	Number	Cable min. Ø	Cable max Ø	Screen	IP	Note
230V	M20*1.5	2	8	15	No	68	
P-NET	M25*1.5	2	13	16	Yes	68	

Alternative and additional options

External position indicator connection	M16*1.5	(1)	8	10	Yes	68	LPU is delivered with a plug in the concerned thread
Reducer (thinner cable)	M25/M20	(2)				68	f. cable gland below
P-NET	M20*1.5	(2)	8	11	Yes	68	f. thinner P-NET cable

Dimensions and Connections LPUM P-NET

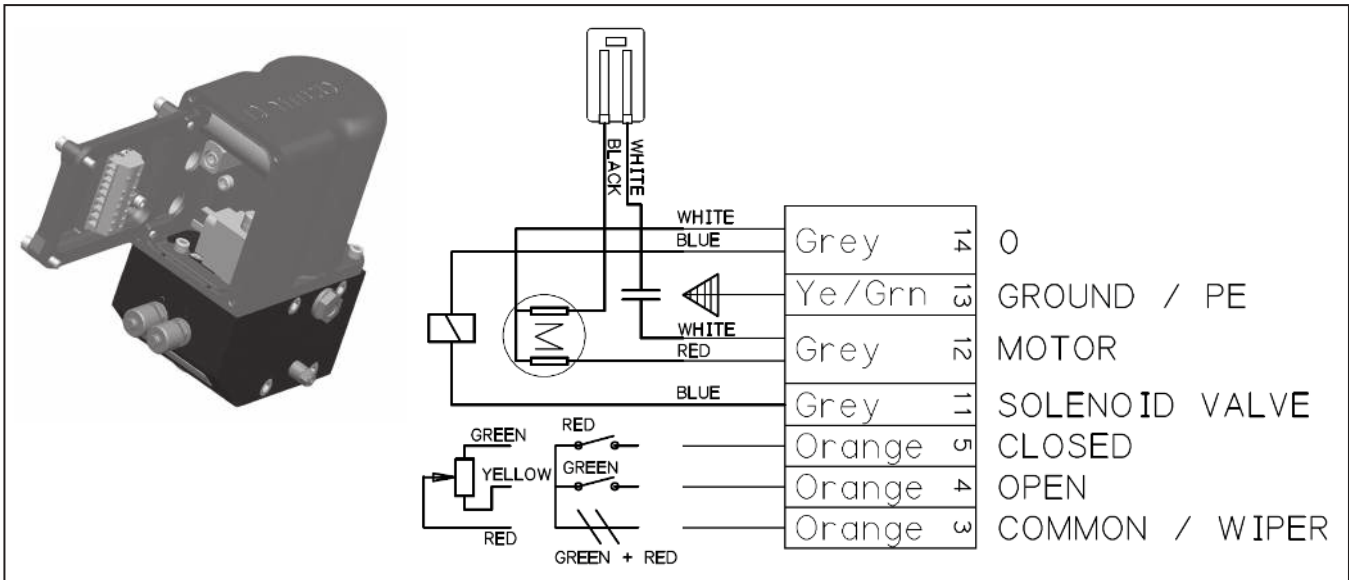


Ground connection is done with a separate M5 screw placed in the cover.

Mounting on Actuators

Direct mounting on BRC 125, 250, 500 - BRCF 125, 250, 500 - KC/KF 65 and KC/KF/KFR 125.

Cable connections - Standard



Placement and Tests

The LPUM can be placed according to LRS approval:

- ENV2 (closed rooms with temperature, humidity and vibrations)
- ENV3 (closed rooms with heat from other components)
- ENV4 (vibrating machinery and connected pipes)

Mounting direction:	Any
Cold test:	Function test at -15°C
Dry heat test:	70°C
Humidity test:	Static and cyclic for 6 days and nights
IP-enclosure:	IP 68, 3 bar in 24 hours
Vibration test:	5-25 Hz/± 1,6 mm and 25-200Hz ± 4.0 g in 3 directions
Mechanical shock:	80g for 6 msec. in 6 directions
Salt spray test:	4 weeks - 5% NaCl
EMC test acc. to IACS E10 (1999)	

Approvals

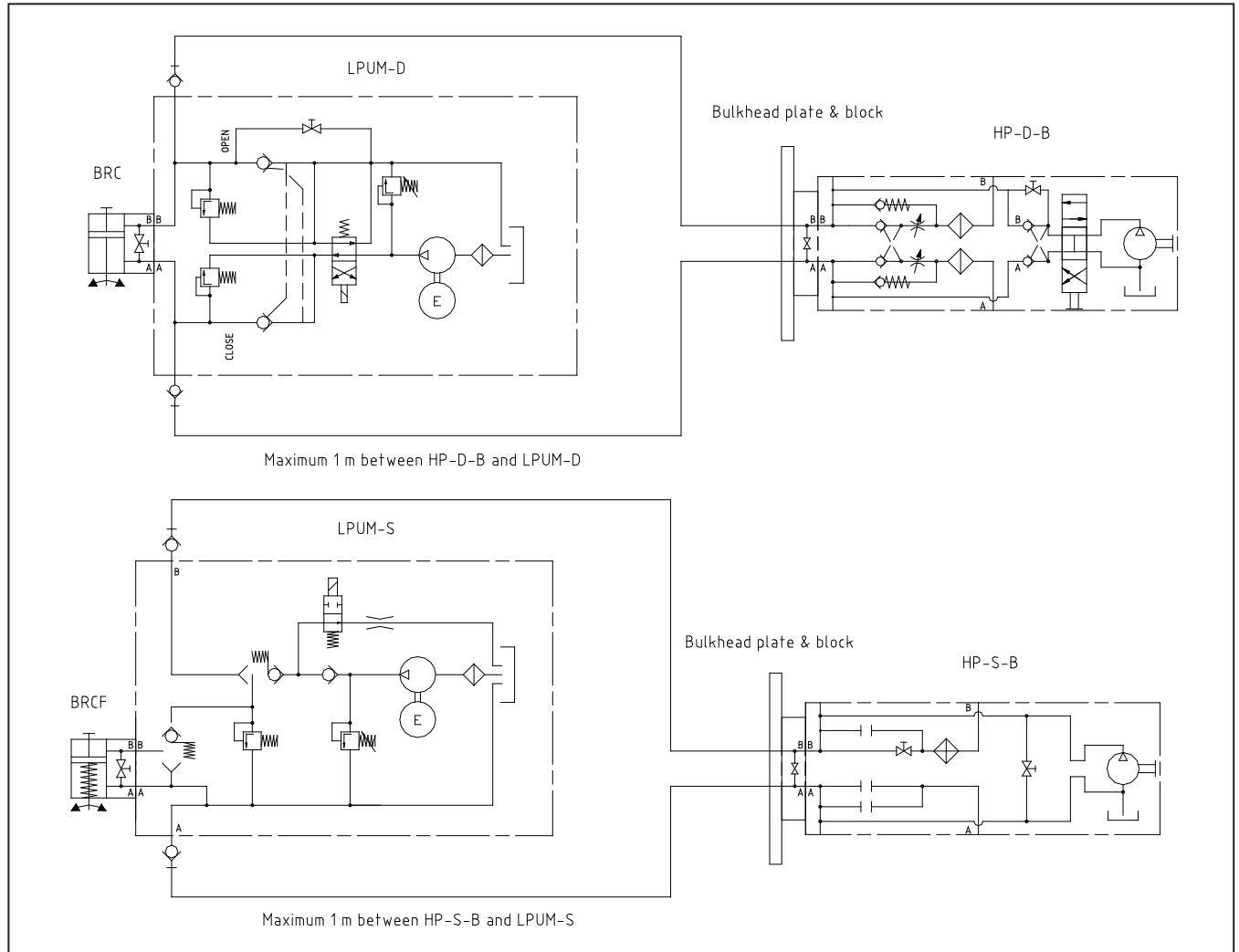
The LPU is type approved by:

- Lloyds Register of Shipping
- Det norske Veritas
- ABS
- Germanischer Lloyd
- Bureau Veritas
- RINA

Emergency Operation

All units are provided with quick connections for connection of a portable hand pump for emergency operation of the valve. These can be replaced by pipes for permanent connection to hand pump - max. length 1m due to small internal tank volume. Handpump must be mounted above the LPUM to ensure an

optimal performance. Some actuators may be emergency operated by a key, when the actuator cross-over valve is opened. Emergency operation is also possible by means of a permanently mounted hand pump. After emergency operation of the valve the remote control is automatically in charge.



©2013 Emerson Process Management. All rights reserved.

The Emerson logo is a trademark and service mark of Emerson Co. Damcos® and the Damcos logotype are registered trademarks of Damcos A/S, Rosemount® TankRadar and the Rosemount logotype are registered trademarks of Rosemount Tank Radar AB.

The contents of this publication are presented for information purposes only, and while effort has been made to ensure their accuracy, they are not to be construed as warranties or guarantees, expressed or implied, regarding the products or services described herein or their use or applicability. Standard Terms and Conditions of Sale can be issued by contacting Damcos A/S or Rosemount Tank Radar AB. We reserve the right to modify or improve the designs and specifications of our products at any time without notice.

Damcos A/S and Rosemount Tank Radar AB accepts no responsibility for any errors that may appear in this publication.

Emerson Process Management

Damcos A/S
Aaderupvej 41
DK-4700 Naestved
T +45 5578 7200
F +45 5578 7272

www.EmersonProcess.com/mtm