



DHP 14-3/ HPC-3 Direct Mounted Hydraulic Hand Pump Unit

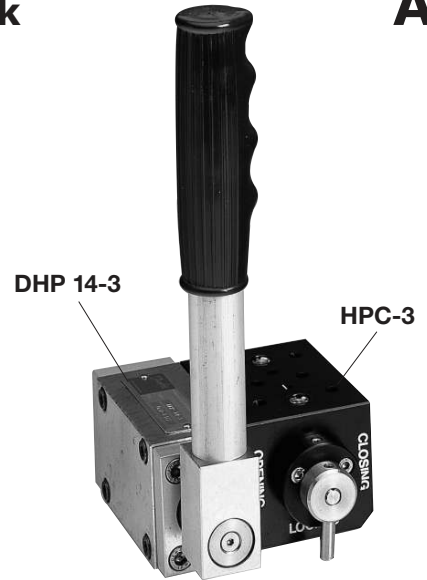
A1

Application: Including Control Block

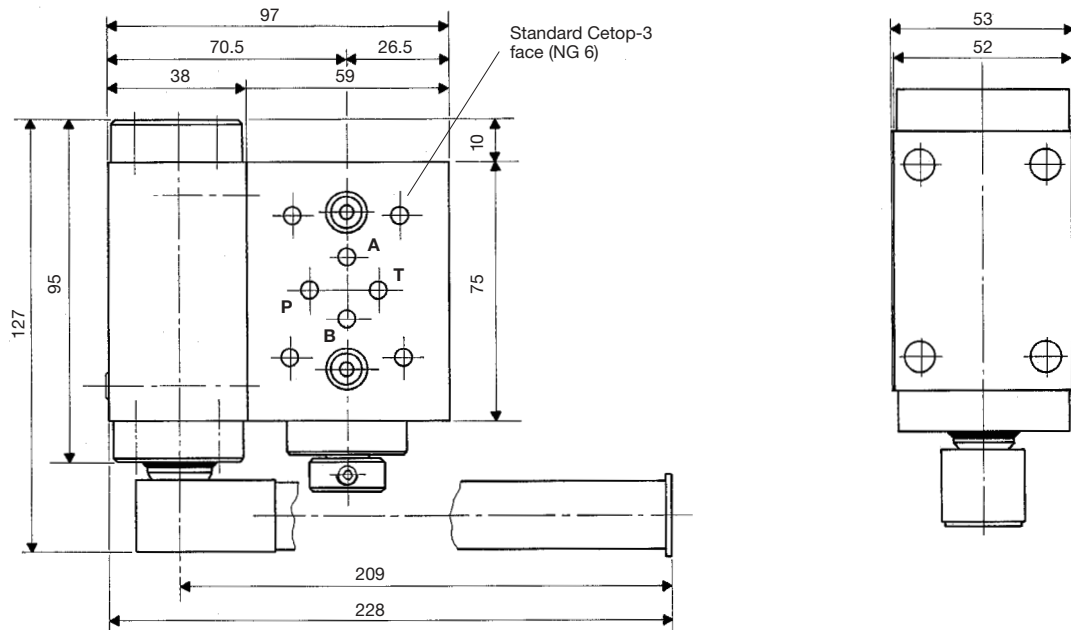
The DHP hand pump unit can be permanently mounted on DKMS quarterturn valve actuators type BRC and DKMS linear actuators type KC. Since these actuators have equal displacement in the opening and closing stroke there is no need for a reservoir in connection with the hand pump. The DHP pump simply moves oil from one side of the actuator piston to the other.

Main Data:

Max. system operating pressure:	210 bar ~ 3000 lbf/in ²
Max. system test pressure:	315 bar ~ 4500 lbf/in ²
Max. hand pump pressure:	120 bar ~ 1740 lbf/in ²
Total dry weight:	1.7 kg ~ 3.75 lb
Oil displacement per double handle stroke:	14 cm ³ ~ 0.85 in ³
Oil viscosity range:	15 - 200 cSt
Temperature range:	-20°C to 80°C ~ 4°F to 176°F
Recommended oil filtration:	Should meet or be better than NAS 1630/10, or ISO Solid Contaminant Code 18/15



Main Dimensions:



Materials:

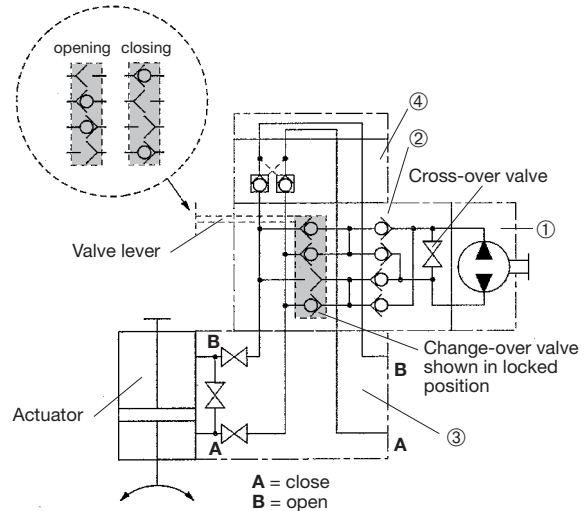
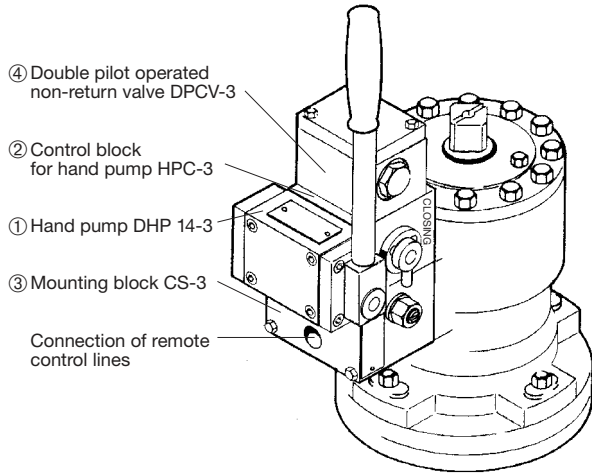
Hand pump DHP 14-3

Housing:	MS 58
Piston:	GGG 40
Spindle:	AISI 329
Cover:	ALMgSi 0.5, anodized
Screws, sign plates and rivets:	AISI 304
Seals:	NBR ~ Acrylonitrile Butadiene

Control block HPC-3

Housing:	ALMgSi 0.5, anodized
Change-over valve shaft:	Sandviken 2002
Cover:	ALMgSi 0.5, anodized
Valve lever:	AISI 303
Screws, sign plates and rivets:	AISI 304
Seals:	NBR ~ Acrylonitrile Butadiene

The company policy aims at continuous improvement of the products and therefore all rights to change the specifications without notice are reserved.

Example of operation of BRC actuator


- ① **Hand Pump DHP 14-3**
Double-acting hand pump – i.e. hydraulic pressure is generated in both directions of pump handle movement.
- ② **Control Block HPC-3**
Change-over valve with three positions: “Opening”, “Closing”, and “Locked” position.
The valve lever must be left in “Locked” position to enable remote control of the actuator.
- ③ **Mounting Block CS-3**
Base block for mounting of control components contains stop valves for ports A and B and a cross-over valve between the two ports.
- ④ **Double pilot operated non-return valve DPCV-3**
Functions as a hydraulic lock as long as there is no pressure in the remote control lines. The locking function ensures that the pressure generated in the hand pump is used to move the actuator and does not “disappear” into the remote control system.

Operation:
Opening of valve

- Turn the lever of the control block ② to “Opening” position.
- Operate the pump handle.
- Stop pumping when the visual indicator on the actuator shows fully “Open” and the pump handle seems locked.
- Upon completion of the operation the valve lever must be set in “Locked” position.

Closing of valve

- Turn the valve lever of the control block ② to “Closing” position.
- Operate the pump handle.
- Stop pumping when the visual indicator on the actuator shows fully “Shut” and the pump handle seems locked.
- Upon completion of the operation the valve lever must be turned to “Locked” position.

Operation features

- Upon completion of the operation and with the actuated valve in the required position, the pump handle can be set in a convenient position by opening the cross-over valve in the control block ② (to be turned counter-clockwise).
The cross-over valve is the notched screw situated opposite the valve lever.

Note: Emergency operation by means of hand pump unit is solely allowed at 0 bar hydraulic pressure in port A and B.

Damcos can accept no responsibility for possible errors in catalogues, brochures and other printed material. Damcos reserves the right to alter its products without notice. This also applies to products already on order provided that such alterations can be made without subsequential changes being necessary in specifications already agreed.
All trademarks in this material are property of the respective companies. Damcos and the Damcos logotype are trademarks of Damcos A/S. All rights reserved.

PARTS-, SPARE & MATERIAL LISTEmerson Process Management
Marine Solutions
Damcos A/S

Component: type & version

HAND PUMP UNIT DHP 14-3 MS/RS

Material no.:

160G2037

Alt.: 1

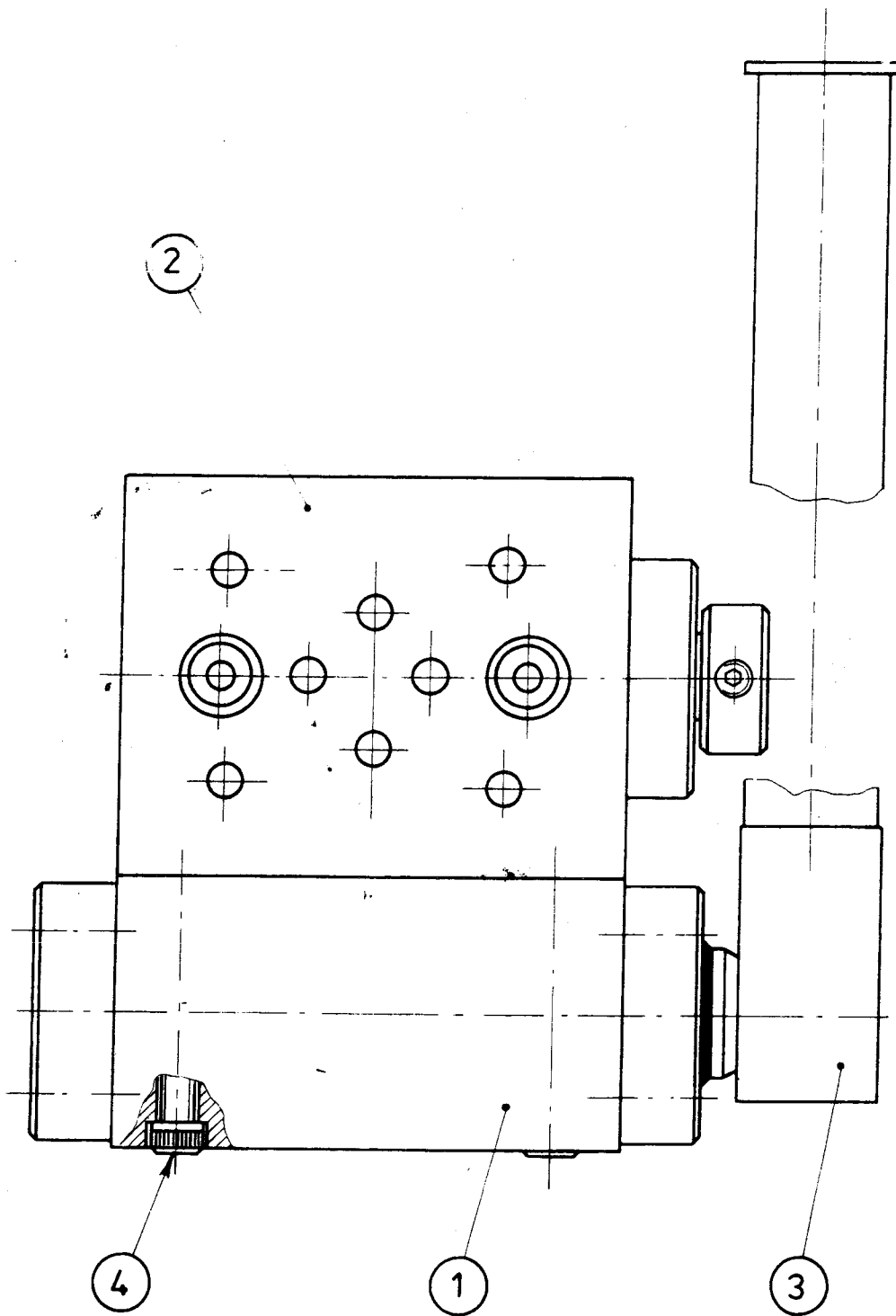
Aaderupvej 41
DK-4700 Naestved
Denmark
T +45 5578 7200
F +45 5578 7272


Page 1 of 1

Notes: All items with stated material number can be purchased as spare parts.
When ordering spare parts: please state material number.

Document numbers referred to: 037E6182

Posnr	Material	Description/ Compound	CTM No.	Quantity	Unit
0001	160G2038	HAND PUMP DHP 14-3 MS/RS		1,000	PC
0002	160G2039	CONTROL BLOCK HPC-3 MS/RS	*P	1,000	PC
0003	160G2040	HANDLE 200 MM RS		1,000	PC
0004	251-1064	SCREW M5X45 X5CrNi18 9(W.no.1.4301)	7A2 F90	4,000	PC



ID-NO.:		MATR. DESIGNATION/DIM.:		NUMBER:	UNIT:	MATR. QUALITY/SURFACE TREATMENT		WEIGHT:		
SURFACES WITH NO. ROUGHNESS GRADE $R_a =$		THIS PRINT IS PROVIDED ON A RESTRICTED BASIS. THIS PRINT IS TO BE RETURNED UPON REQUEST. IT IS TO BE USED ONLY FOR THE PURPOSE FOR WHICH IT WAS EXPRESSLY PROVIDED AND IS NOT TO BE COPIED IN ANY MANNER, NOR IS INFORMATION TAKEN THERE FROM TO BE TRANSMITTED OR PASSED ON TO OTHERS WITHOUT THE EXPRESSED PERMISSION OF DANFOSS SYSTEM HYDRAULIK. IT IS NOT TO BE USED IN ANY WAY DETRIMENTAL TO DANFOSS SYSTEM HYDRAULIK.								
FOR DIMENSIONS WITHOUT A TOLERANCE INDICATION:		DIMENSIONS IN MILLIMETRES UNLESS OTHERWISE STATED		FIRST ANGLE PROJECTION ISO METHOD E	ALTR.	DATE	BY	CHECK	APPR.	ISSUE
NOMINEL DIM. OVER TO	TOLERANCE ISO 2768	REPLACE:		MODEL:	913	830113	BNH			1
0.5 - 6	± { 0.1 0.2 0.3 0.5 0.8	REPLACED BY:		SCALE:		830601	BNH			2
6 - 30				1:1						
30 - 120										
120 - 315										
315 - 1000		ID-NO.:	TOTAL WEIGHT:							
 DANFOSS SYSTEM HYDRAULIK A/S		HANDPUMP HÅNDPUMPE / CETOP 3		PAGE: /		DRWG. NO.: V		0.37 E.6.18.1		

51K