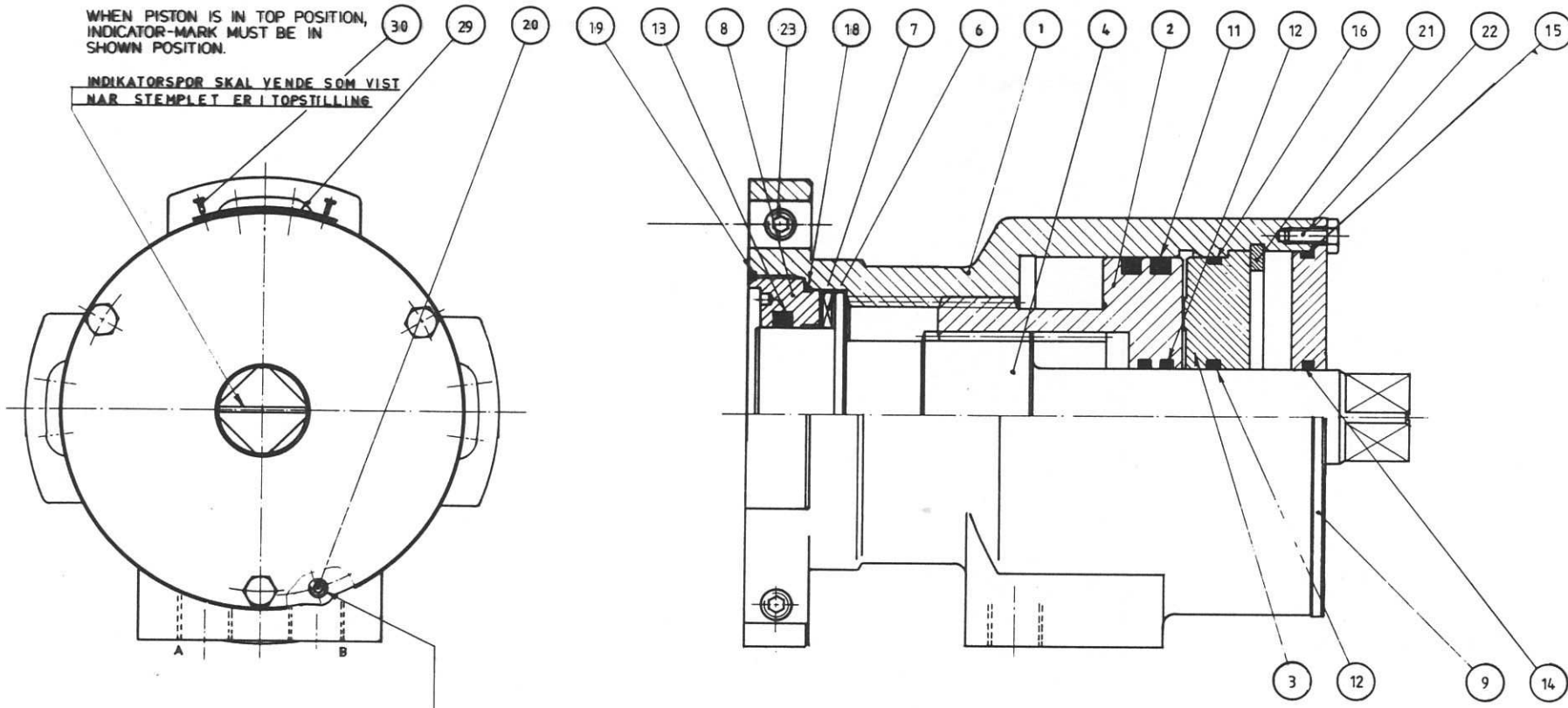
 <b>DANFOSS SYSTEM HYDRAULIK A/S</b>		PARTS-, SPARE PARTS, & MATERIAL LIST				
		COMPONENT: TYPE & VERSION		SHEET: 1 OF:		
		BRC 012 - A1		PSM.NO. 051P4252		ISSUE
						X
Notes: All items with stated ID nos. can be purchased as spare parts. When ordering spare parts - state ID no.				DATE	BY	CHECK
DRAWINGS REFERRED TO:						
DRAWING NO.	REF.	DESCRIPTION				
051C4252	a	Assembly drawing				
	b					
	c					
	d					
				900103	SV	2

ITEM Nos. or capital letters	REF.	ID NO.	PARTS DESCRIPTION	QTY	MATERIAL	CTM NO.
1	a		Housing	1	GGG40	A05
2	a		Piston	1	GGG40	A10
3	a	030E4902	Top cover	1	GGG40	A10
4	a	160N0339	Output shaft	1	SKF 280	B54
6	a	390-0011	Thrust bearing ø55	1	St-3	POL
7	a	390-0111	Thrust disc ø55	2	100Cr6	ROL
8	a	051C5841	Bottom member	1	GGG40	A10
9	a	052E6531	Indicator cover	1	MS 58	L05
11	a		X-ring 88.27/98.93*5.33	2	NBR 85	PD
12	a		X-ring 29.74/36.80*3.53	3	NBR 85	PD
13	a		X-ring 54.50/65.16*5.33	1	NBR 85	PD
14	a		X-ring 29.74/36.80*3.53	1	NBR 85	PD
15	a		Gasket	1	CR	
16	a		O-ring 94.50*3.0	1	NBR 70	NBR
18	a		O-ring 72.69*2.62	1	NBR 70	NBR
19	a		O-ring 87.10*2.4	1	NBR 70	NBR
20	a		Plug	1	9SMnPb28	B50
21	a	267-0376	Circlip ø105	1	Ck 75	Y05
22	a	250-3231	Screw M 5*12	DIN 933	3 70/A2	7/A2
23	a	251-7134	Pin screw M10*30	DIN 916	8 70/A2	7/A2
27	a	208-0053	Copper disc ø17/ø22*1.5	2	Copper	L02
28	a	033E6181	Plug G3/8	2	9SMnPb28	B50
29	a		Name plate	1	Stainless	F90
30	a		Pin ø1.9*5	4	50/A4	5/A4
200	a	230-0044	Plate open/shut	1	Stainless	F90
		219-0389	<b>Seal kit BRC-012 - A1</b> Consisting of: Item 11-12-13-14-15- 16-18-19.			

WHEN PISTON IS IN TOP POSITION,  
INDICATOR-MARK MUST BE IN  
SHOWN POSITION.

INDIKATORSPOR SKAL VENDE SOM VIST  
NAR STEMPLET ER I TOPSTILLING



The thread must be lubricated with loctite 542.  
The orings groove must be lubricated with hydraulic oil.  
The plug must be tightened with 1-2 Nm, so the plug are cracking.

N		ID NO	NOMRE DE SIGNIFIKATION		NUMBER	UNIT	DATE	VERSION	WEIGHT
SURFACES WITH RE-ROUGHENED FINED: $R_a$		THIS PRINT IS PROVIDED ON A RESTRICTED BASIS. THIS PRINT IS TO BE RETURNED UPON REQUEST. IT IS TO BE USED ONLY FOR THE PURPOSE FOR WHICH IT WAS EXAMINED AND IS NOT TO BE COPIED IN ANY MANNER NOR IS INFORMATION THEREIN FROM TO BE TRANSMITTED OR PASSED ON TO OTHERS WITHOUT THE EXPRESS PERMISSION OF DANFOSS SYSTEM HYDRAULIK A/S. IT IS NOT TO BE USED IN ANY WAY DE TRAEANTAL TO DANFOS SYSTEM HYDRAULIK.							
FOR DIMENSIONS WITHOUT A TOLERANCE INDICATION									
TOLERANCE OVER TO		TOLERANCE ISO 2768							
0.5 - 4	0.1								
4 - 30	0.2								
30 - 120	0.3								
120 - 315	0.5								
315 - 1000	0.8								
DIMENSIONS IN MILLIMETRES UNLESS OTHERWISE SPECIFIED		FIRST ANGLE PROJECTION		SCALE					
REPLACES		REV.		SCALE					
REPLACES		SCALE		SCALE					
DANFOS		DANFOS		SCALE					
DANFOSS SYSTEM HYDRAULIK A/S		DANFOSS SYSTEM HYDRAULIK A/S		SCALE					
ASSEMBLY DRAWING		ASSEMBLY DRAWING		SCALE					
BRC 012		BRC 012		SCALE					
A1		A1		SCALE					
0.5 1 C 4 2 5		0.5 1 C 4 2 5		SCALE					