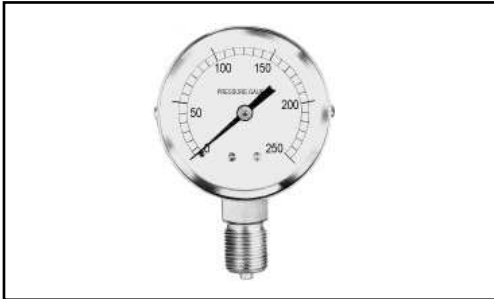


Product Data Sheet

PD 380-0606.1

September 2005

Pressure gauge



Description:

VDO high pressure gauge with glycerin filled housing.

Technical data:

Housing:	ABS which is corrosion-resistant and shockproof.
Front glass:	Plexiglass ultrasonic-welded to housing.
Scale plate:	Aluminium Din. 16109.1
Helical spring:	Steel working material 1.4571
Connection:	Copper CuZu (MS)
Flange:	Copper CuZu (MS) chrome.
Damped for pressure peaks.	
Enclosure rating:	IP 65
Exactness:	$\pm 0.1\%$
Scale range:	0 - 250 bar
Weight:	0.18 kg

