



# BRC 032

## Hydraulic Double-Acting Balanced Rotary Actuator 90° (Quarterturn)

### A1

#### Main Data:

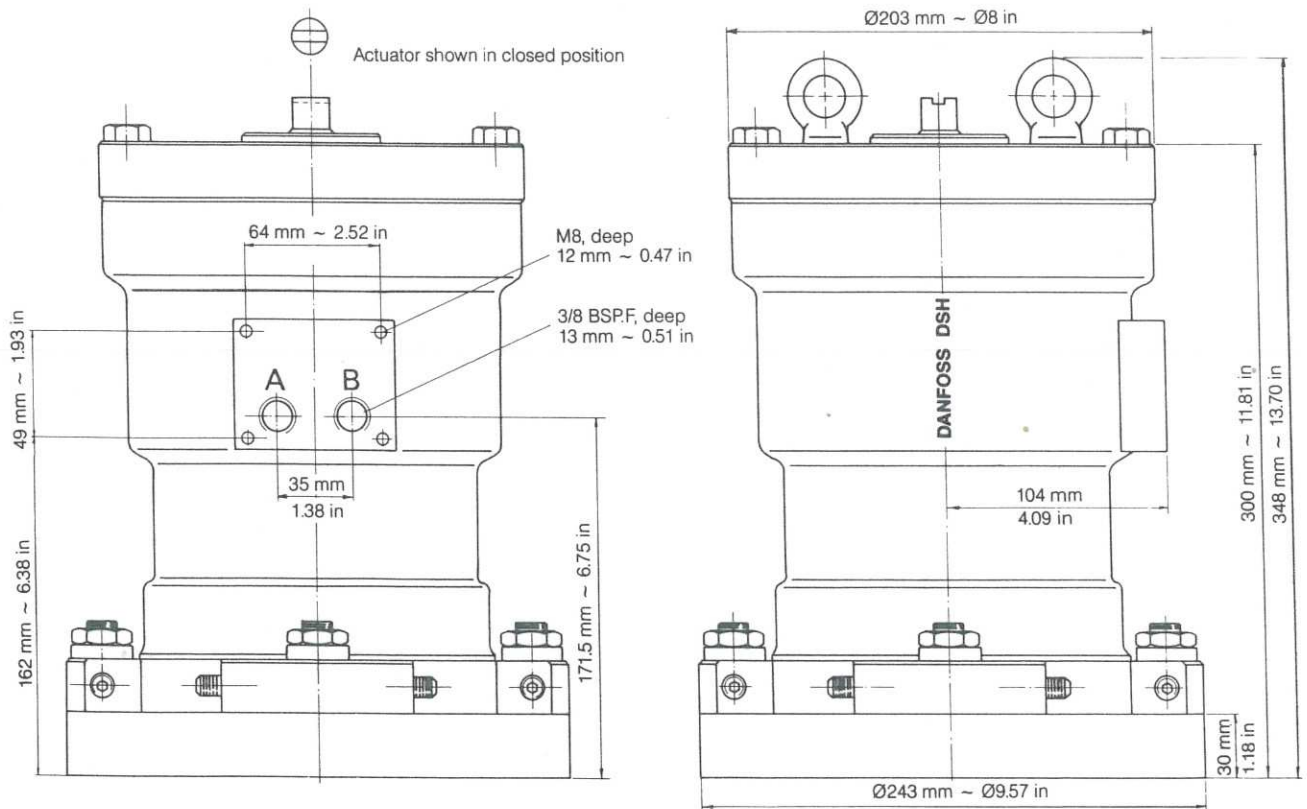
Max. working pressure: 210 bar ~ 3046 lbf/in<sup>2</sup>  
 Total dry weight: 55 kg ~ 120.2 lb incl. 14.5 kg ~ 32 lb for mounting set.  
 Oil displacement: 927 cm<sup>3</sup> ~ 56.5 in<sup>3</sup> - identical for both directions.  
 Temperature range: -20°C to 80°C ~ -4°F to 176°F.  
 Rotation: 90° ± 1°.  
 Hydraulic media and viscosities: We recommend acid-free hydraulic oil.  
 Viscosity range: 15 - 200 cSt. For recommended brands and for other media than oil please refer to separate data sheet.



#### Tests and Approvals:

Burst tested to 620 bar ~ 8992 lbf/in<sup>2</sup>  
 Vibration and high impact shock tested to U.S. Mil. standard 167 and 901 C.

#### Main Dimensions:



A port: Close (clockwise seen from above), B port: Open

The company policy aims at continuous improvement of the products and therefore all rights to change the specifications without notice are reserved.



# BRC 032

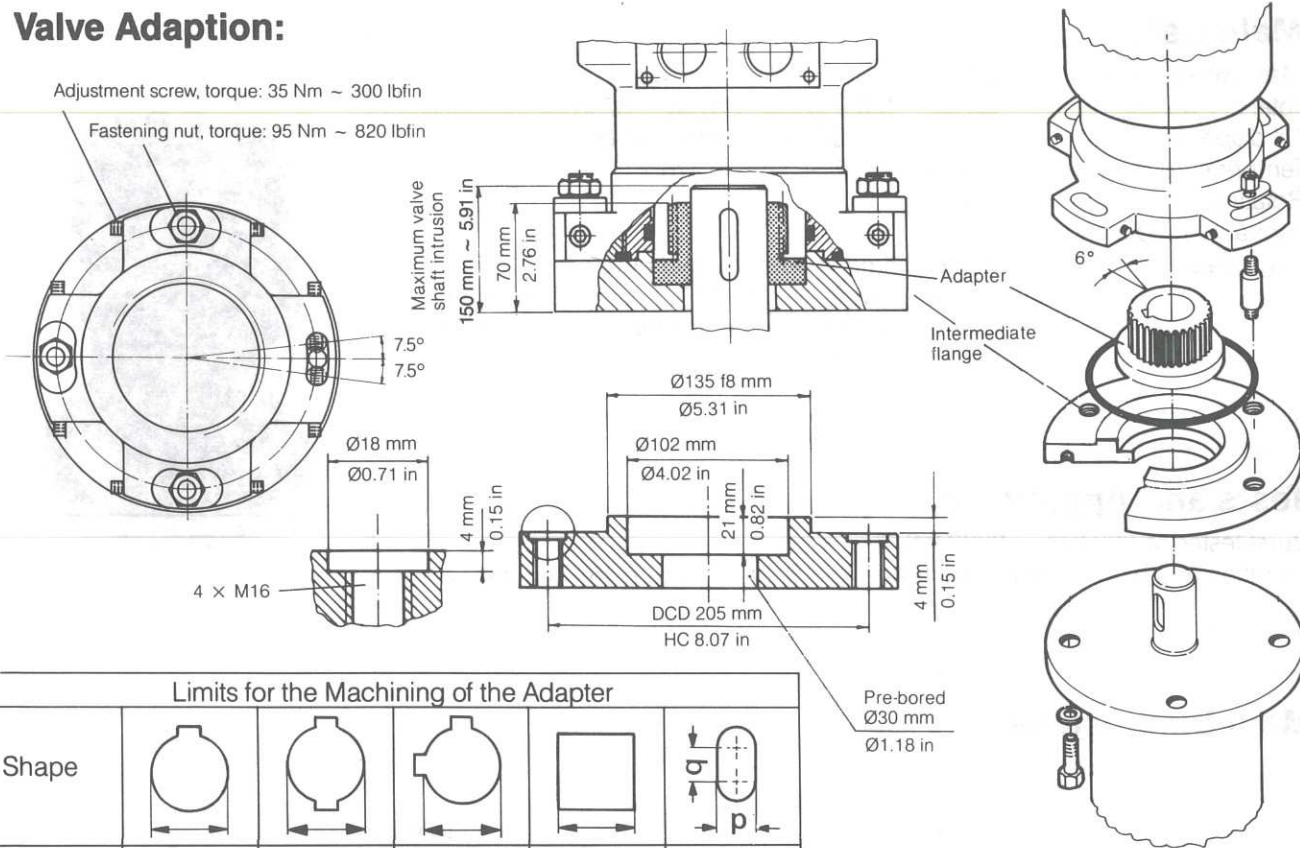
## Hydraulic Double-Acting Balanced Rotary Actuator 90° (Quarterturn)

### A1

### Valve Adaption:

Adjustment screw, torque: 35 Nm ~ 300 lbf·in

Fastening nut, torque: 95 Nm ~ 820 lbf·in



Limits for the Machining of the Adapter

Shape					
mm	60	60	60	50	p+q 71
in	2.36	2.36	2.36	1.97	2.8

### Performance:

