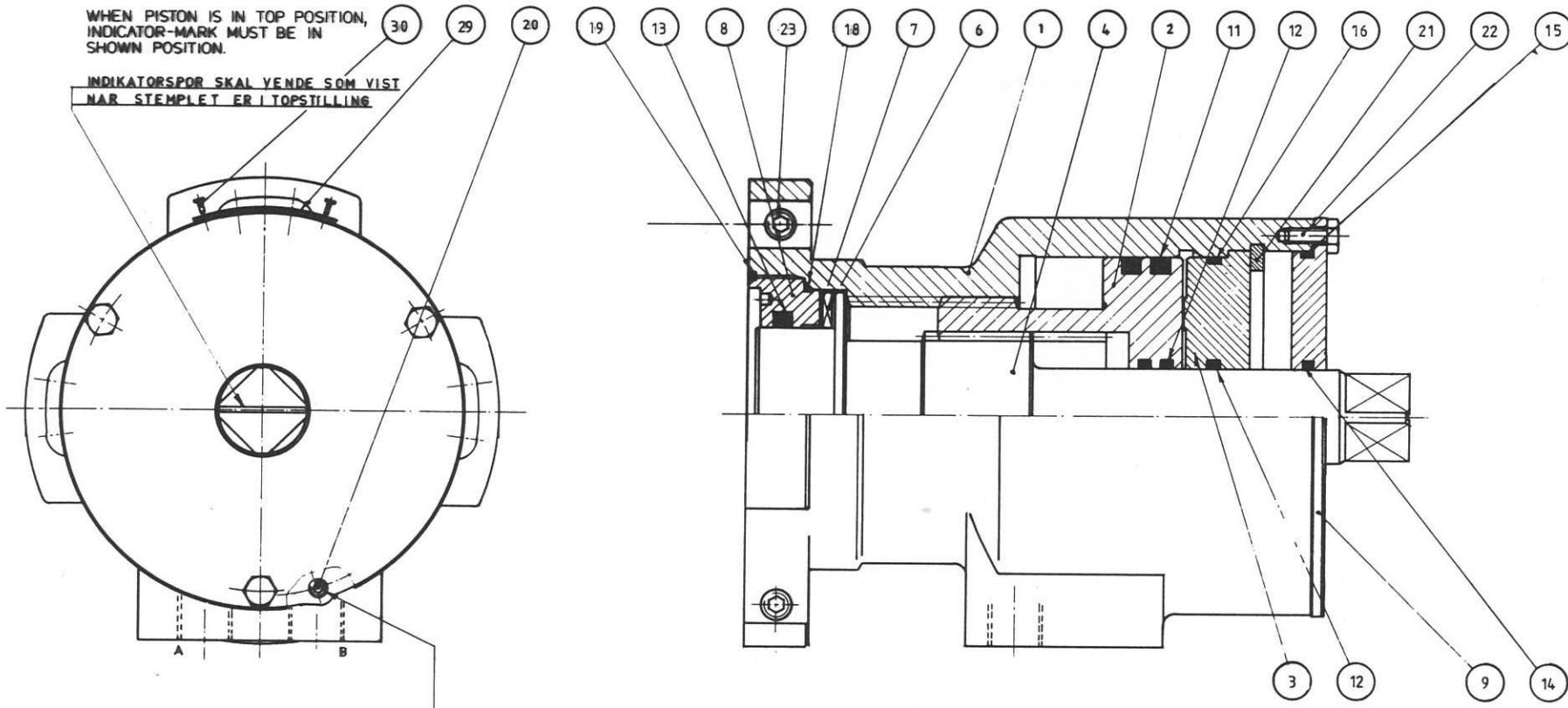
 DANFOSS SYSTEM HYDRAULIK A/S		PARTS-, SPARE PARTS, & MATERIAL LIST				
		COMPONENT: TYPE & VERSION		SHEET: 1 OF:		
		BRC 012 - A1		PSM.NO. 051P4252		ISSUE
						X
Notes: All items with stated ID nos. can be purchased as spare parts. When ordering spare parts - state ID no.				DATE	BY	CHECK
DRAWINGS REFERRED TO:						
DRAWING NO.	REF.	DESCRIPTION				
051C4252	a	Assembly drawing				
	b					
	c					
	d					
				900103	SV	2

ITEM Nos. or capital letters	REF.	ID NO.	PARTS DESCRIPTION	QTY	MATERIAL	CTM NO.	
							CTM no. refers to DSH sheets: COMPARISON TABLES for MATERIALS
1	a		Housing	1	GGG40	A05	
2	a		Piston	1	GGG40	A10	
3	a	030E4902	Top cover	1	GGG40	A10	
4	a	160N0339	Output shaft	1	SKF 280	B54	
6	a	390-0011	Thrust bearing ø55	1	St-3	POL	
7	a	390-0111	Thrust disc ø55	2	100Cr6	ROL	
8	a	051C5841	Bottom member	1	GGG40	A10	
9	a	052E6531	Indicator cover	1	MS 58	L05	
11	a		X-ring 88.27/98.93*5.33	2	NBR 85	PD	
12	a		X-ring 29.74/36.80*3.53	3	NBR 85	PD	
13	a		X-ring 54.50/65.16*5.33	1	NBR 85	PD	
14	a		X-ring 29.74/36.80*3.53	1	NBR 85	PD	
15	a		Gasket	1	CR		
16	a		O-ring 94.50*3.0	1	NBR 70	NBR	
18	a		O-ring 72.69*2.62	1	NBR 70	NBR	
19	a		O-ring 87.10*2.4	1	NBR 70	NBR	
20	a		Plug	1	9SMnPb28	B50	
21	a	267-0376	Circlip ø105	1	Ck 75	Y05	
22	a	250-3231	Screw M 5*12	DIN 933	3	70/A2	7/A2
23	a	251-7134	Pin screw M10*30	DIN 916	8	70/A2	7/A2
27	a	208-0053	Copper disc ø17/ø22*1.5	2	Copper	L02	
28	a	033E6181	Plug G3/8	2	9SMnPb28	B50	
29	a		Name plate	1	Stainless	F90	
30	a		Pin ø1.9*5	4	50/A4	5/A4	
200	a	230-0044	Plate open/shut	1	Stainless	F90	
		219-0389	Seal kit BRC-012 - A1				
			Consisting of:				
			Item 11-12-13-14-15-				
			16-18-19.				

WHEN PISTON IS IN TOP POSITION,
INDICATOR-MARK MUST BE IN
SHOWN POSITION.

INDIKATORSPOR SKAL VENDE SOM VIST
NAR STEMPLET ER I TOPSTILLING



The thread must be lubricated with loctite 542.
The orings groove must be lubricated with hydraulic oil.
The plug must be tightened with 1-2 Nm, so the plug are cracking.

N		ID NO	NOMENCLATURE		NUMBER	UNIT	DATE	STATUS	WEIGHT
SURFACES WITH RE-ROUGHENED FINED: R_a		THIS PRINT IS PROVIDED ON A RESTRICTED BASIS. THIS PRINT IS TO BE RETURNED UPON REQUEST. IT IS TO BE USED ONLY FOR THE PURPOSE FOR WHICH IT WAS EXAMINED AND IS NOT TO BE COPIED IN ANY MANNER NOR IS INFORMATION THEREIN TO BE TRANSMITTED OR PASSED ON TO OTHERS WITHOUT THE EXPRESS PERMISSION OF DANFOSS SYSTEM HYDRAULIK A/S. IT IS NOT TO BE USED IN ANY WAY DE FRAUDULENT TO DANFOSS SYSTEM HYDRAULIK A/S.							
FOR DIMENSIONS WITHOUT A TOLERANCE INDICATION									
TOLERANCE OVER TO		TOLERANCE ISO 2768							
0.5 - 3	0.1								
3 - 30	0.2								
30 - 120	0.3								
120 - 315	0.5								
315 - 1000	0.8								
DIMENSIONS IN MILLIMETERS UNLESS OTHERWISE SPECIFIED		FIRST ANGLE PROJECTION		SCALE					
REPLACES		REV.		DATE					
REPLACES		SCALE		1:1					
DANFOS									
DANFOSS SYSTEM HYDRAULIK A/S		ASSEMBLY DRAWING		BRC 012					
PART		A1		0.5 1 C 4 2 5					