

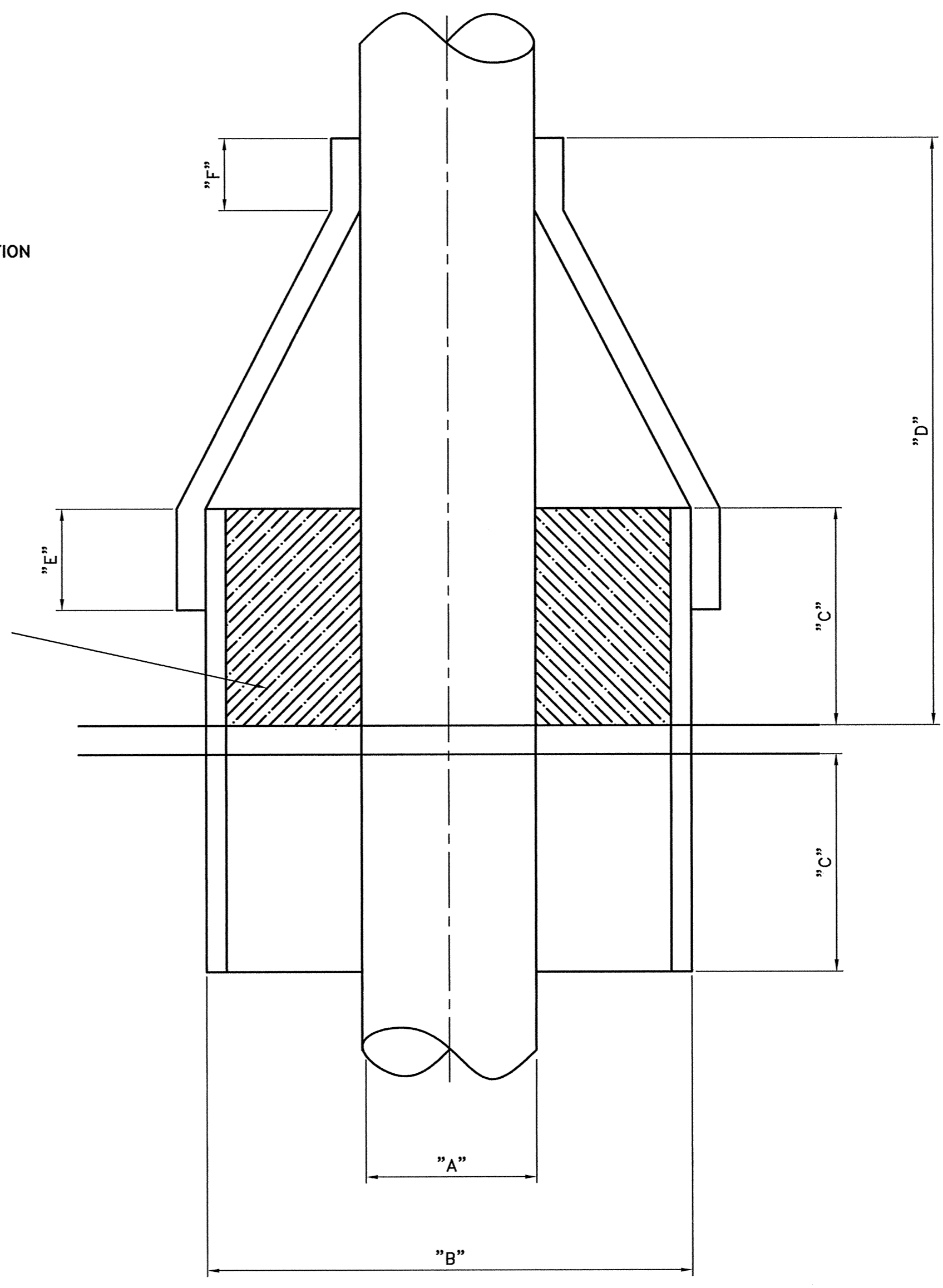
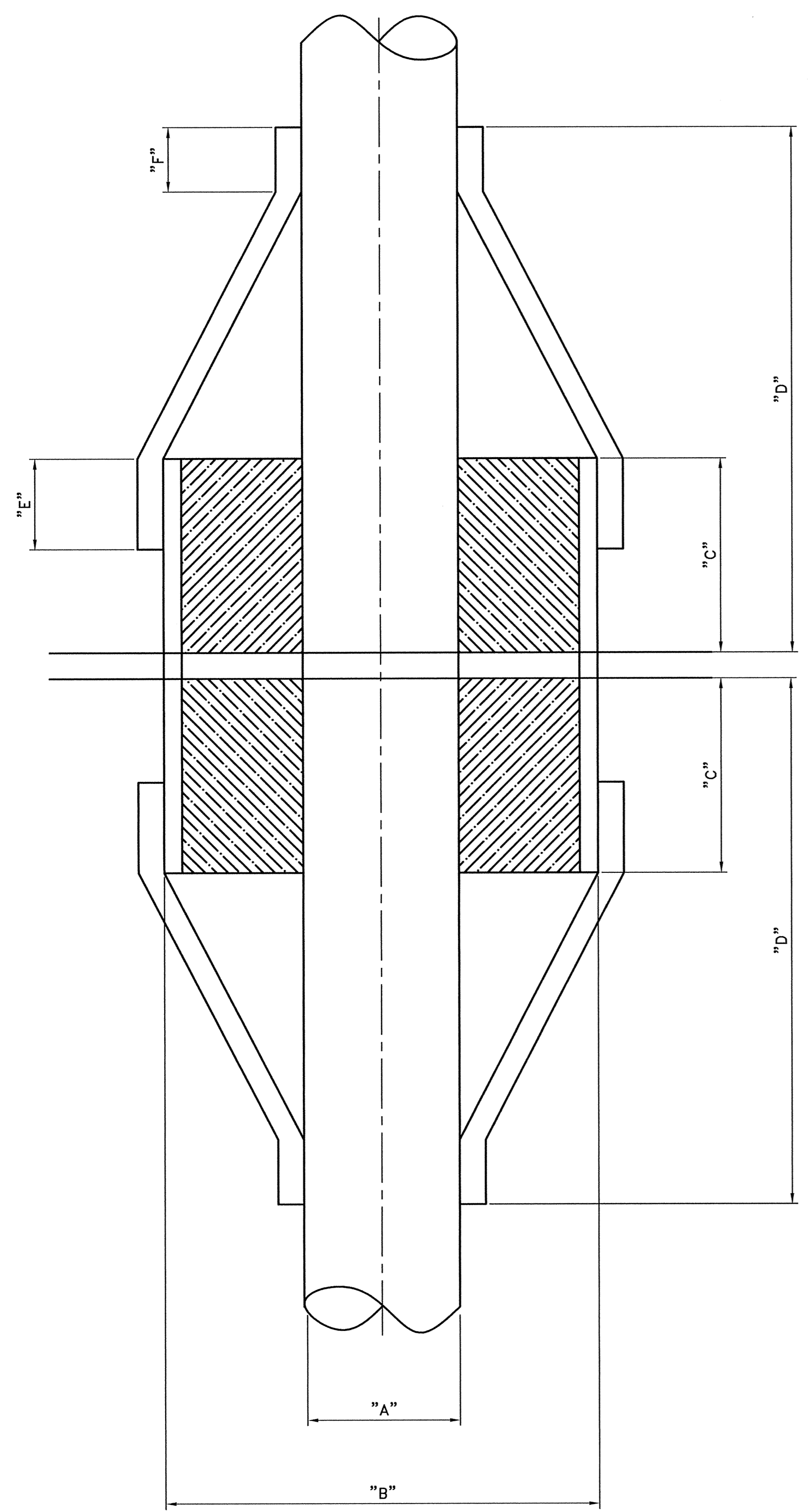
MEGGITT POLYMER SOLUTIONS, ASHBY ROAD, SHEFFIELD, LOVESHAMPOUR, LUCKERSHIRE, ENGLAND, LE12 9DQ.  
THE INFORMATION CONTAINED IN THIS DOCUMENT IS PROPERTY AND PROPRIETARY INFORMATION OF MEGGITT AEROSPACE LIMITED TRADING AS MEGGITT POLYMER SOLUTIONS AND IS DISCLOSED STRICTLY IN CONFIDENCE. IT MUST NOT BE USED, DISCLOSED TO OTHERS OR REPRODUCED WITHOUT THE EXPRESS WRITTEN CONSENT OF MEGGITT POLYMER SOLUTIONS. IF CONSENT IS GIVEN FOR REPRODUCTION IN WHOLE OR IN PART, THIS NOTICE AND ANY NOTICE SET FORTH WITHIN THE DOCUMENT SHALL APPEAR IN ANY SUCH WHOLE OR PARTIAL REPRODUCTION.

ITEM	QTY	DESCRIPTION	MAT'L

**DOUBLE PENETRATION ARRANGEMENT**

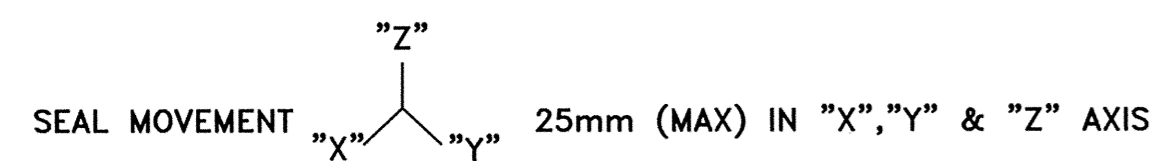
**SINGLE PENETRATION ARRANGEMENT**

FOR SINGLE PENETRATION A0-HO INSULATION PACK WITH 128Kg/M3 CERAMIC FIBROUS INSULATION.  
FOR DOUBLE PENETRATION REPEAT ABOVE AND BELOW FOR DECK OR BLAST WALL



PIPE SIZE	DIMENSION "A" PIPE SIZE OUTSIDE DIA	SLEEVE SIZE	DIMENSION "B" SLEEVE SIZE OUTSIDE DIA	DIMENSION "C" MINIMUM	DIMENSION "D" MINIMUM	DIMENSION "E" FOR SLEEVE CLAMPING	DIMENSION "F" FOR PIPE CLAMPING	SEAL HEIGHT "G"
3/4"	1.05"(26.7mm)	4"	4.5"(114.3mm)	40mm	167mm	25mm	25mm	152mm
1"	1.315"(33.4mm)	6"	6.625"(168.3mm)	40mm	167mm	25mm	25mm	152mm
1 1/2"	1.9"(48.3mm)	6"	6.625"(168.3mm)	40mm	167mm	25mm	25mm	152mm
2"	2.3755"(60.3mm)	6"	6.625"(168.3mm)	40mm	167mm	25mm	25mm	152mm
3"	3.5"(88.9mm)	8"	8.625"(219.1mm)	40mm	167mm	25mm	25mm	152mm
4"	4.5"(114.3mm)	8"	8.625"(219.1mm)	40mm	167mm	25mm	25mm	152mm
5"	5.563"(141.3mm)	8"	8.625"(219.1mm)	40mm	167mm	25mm	25mm	152mm
6"	6.625"(168.3mm)	12"	12.75"(323.9mm)	75mm	167mm	25mm	25mm	152mm
8"	8.625"(219.1mm)	14"	14"(355.67mm)	75mm	228mm	50mm	25mm	203mm
10"	10.75"(273.1mm)	16"	16"(406.4mm)	75mm	228mm	50mm	25mm	203mm
12"	12.75"(323.9mm)	18"	18"(457.2mm)	75mm	279mm	50mm	25mm	254mm
14"	14"(355.67mm)	20"	20"(508mm)	75mm	279mm	50mm	50mm	254mm
16"	16"(406.4mm)	24"	24"(609.6mm)	75mm	279mm	50mm	50mm	254mm
18"	18"(457.2mm)	28"	28"(711.2mm)	75mm	279mm	50mm	50mm	254mm
20"	20"(508mm)	28"	28"(711.2mm)	75mm	279mm	50mm	50mm	254mm
24"	24"(609.6mm)	32"	32"(812.8mm)	75mm	279mm	50mm	50mm	254mm
30"	30"(762mm)	36"	36"(914.4mm)	75mm	279mm	50mm	50mm	254mm

CLIPPING LENGTHS OF SEAL AS PER DIMENSIONS "E" & "F" ACCOMMODATE THE USE OF SINGLE BAND CLAMP APPLICATIONS UP TO 350mm DIAMETER OVER PIPES AND SLEEVES WITH DOUBLE CLAMPING APPLIED FOR DIAMETERS OF PIPES AND SLEEVES OVER 350mm.



NOTE THAT SEAL IS TO BE COMPRESSED BY 25mm IN "Z" AXIS WHEN INSTALLED

FOR REQUIREMENTS WHERE MORE THAN 25mm IN ANY DIRECTION ARE REQUIRED IT WILL BE NECESSARY TO INCREASE THE OVERALL HEIGHT OF THE SEAL. IN THESE CASES PLEASE CONSULT WITH BESTOBELL OILFIELD PRODUCTS GIVING MAXIMUM HEIGHT AVAILABLE FOR SEAL AND ANY OTHER CONSTRICTING DIMENSIONS.

FOR PIPE SIZES NOT INCLUDED IN THE TABLE PLEASE CONTACT BESTOBELL OILFIELD PRODUCT FOR FURTHER INFORMATION

1	21 02 11	FIRST ISSUE	MW
---	----------------	-------------	----

COMPUTER AIDED DRAWING  
NO MANUAL ALTERATION

TOLERANCES  
±3 mm

IF IN DOUBT ASK  
DO NOT SCALE

CAGE CODE  
K1406

ALL DIMENSIONS ARE IN MILLIMETRES  
UNLESS OTHERWISE STATED

Export Control Standard	
CI Number	N/A
Technology	N/A
Released by	M.Viddowson

CUSTOMER DRAWING NUMBER N/A  
GENERIC LAYOUT FOR A0-HO FIRE SEALS  
DRAWING NUMBER BFT1500 AAA  
SHEET 1 of 1