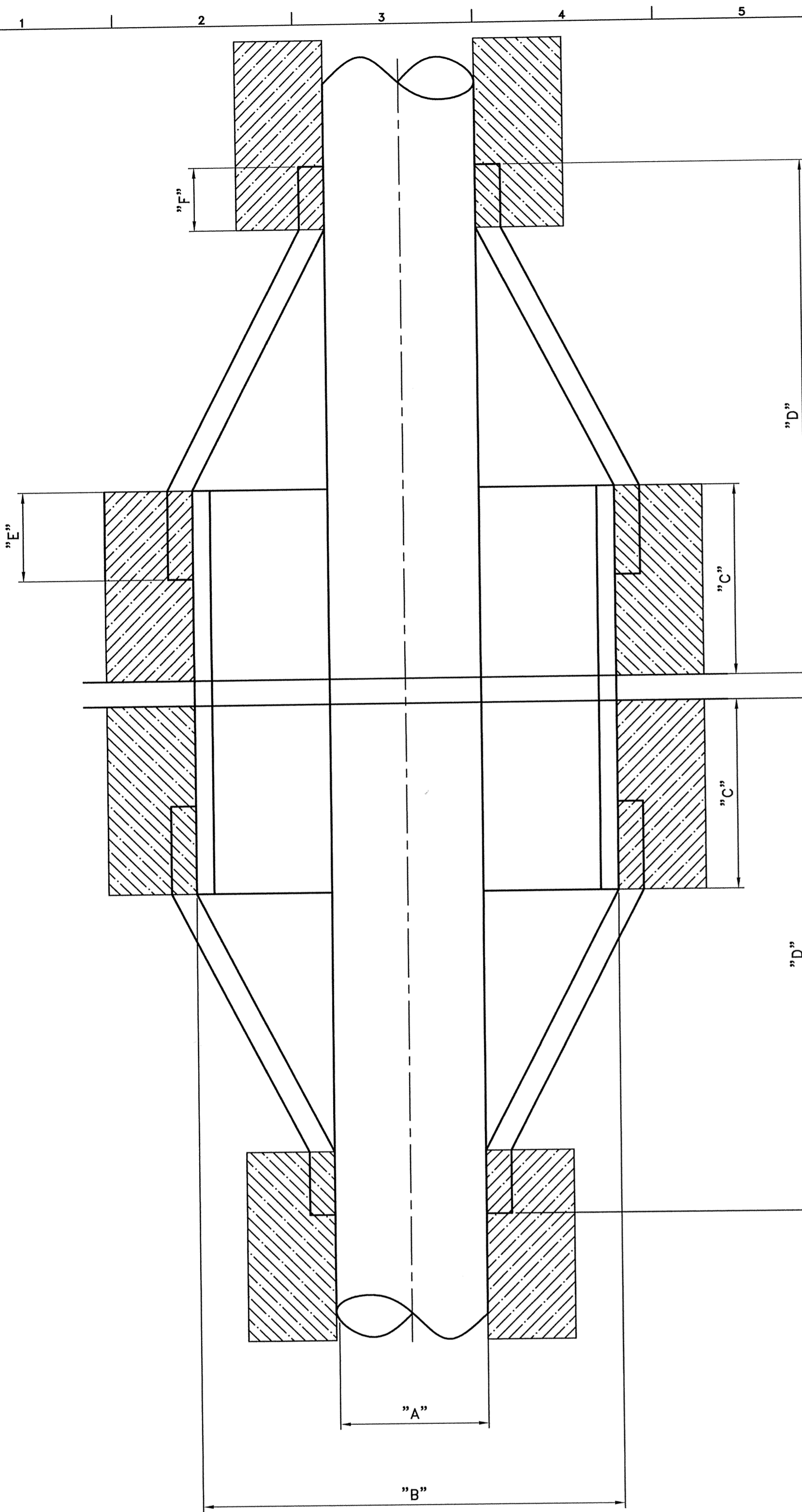


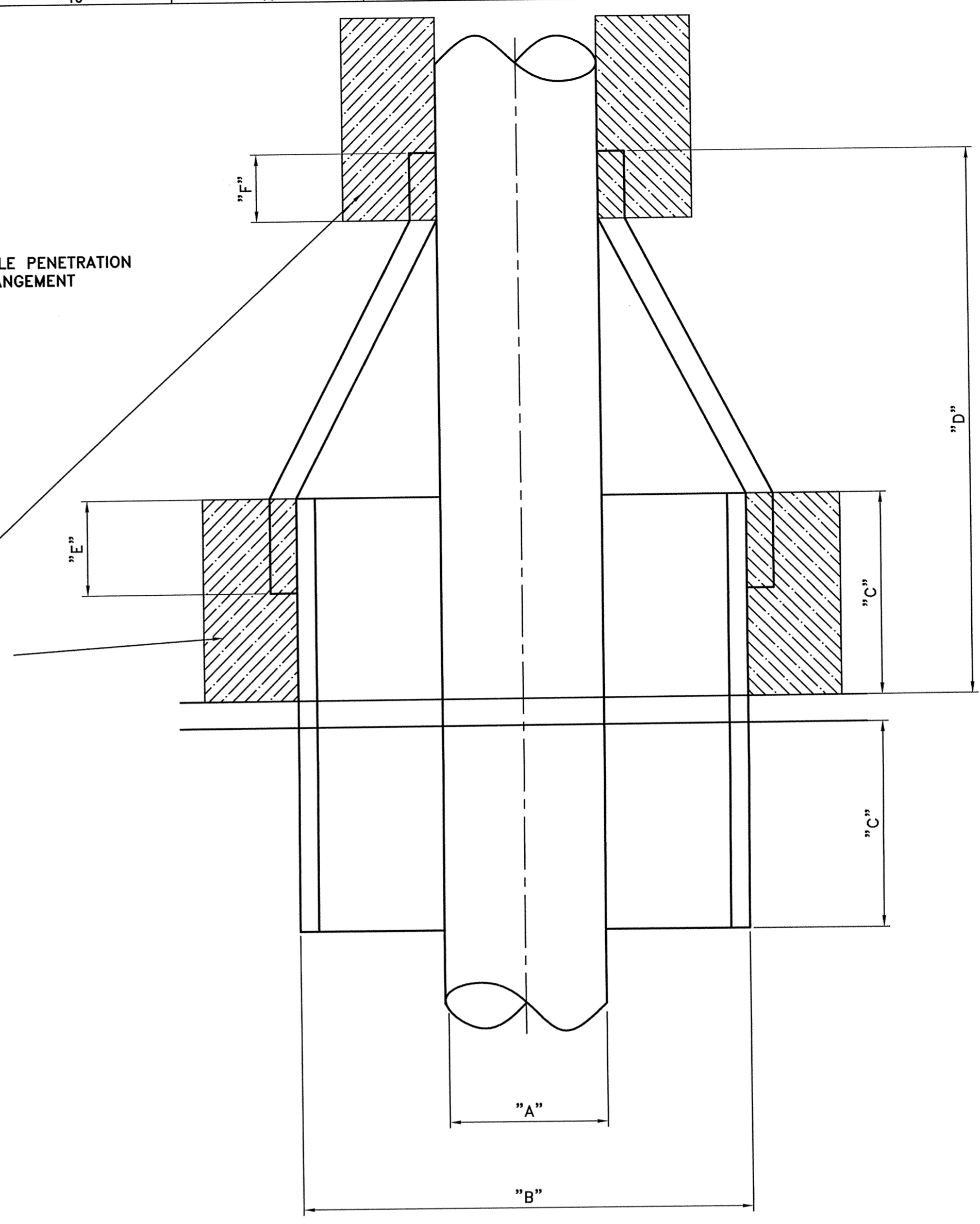
MEGGITT POLYMER SOLUTIONS, ASHBY ROAD, SHEPHERD, LEICESTERSHIRE, ENGLAND, LE15 8ED.  
THE INFORMATION CONTAINED IN THIS DOCUMENT IS PROPERTY AND PROPRIETARY INFORMATION OF MEGGITT AEROSPACE LIMITED TRADING AS MEGGITT POLYMER SOLUTIONS AND IS DISCLOSED STRICTLY IN CONFIDENCE. IT MUST NOT BE USED, DISCLOSED TO OTHERS OR REPRODUCED WITHOUT THE EXPRESS WRITTEN CONSENT OF MEGGITT POLYMER SOLUTIONS. IF CONSENT IS GIVEN FOR REPRODUCTION IN WHOLE OR IN PART, THIS NOTICE AND ANY NOTICE SET FORTH WITHIN THIS DOCUMENT SHALL APPEAR IN ANY SUCH WHOLE OR PARTIAL REPRODUCTION.

ITEM	QTY	DESCRIPTION	MAT'L



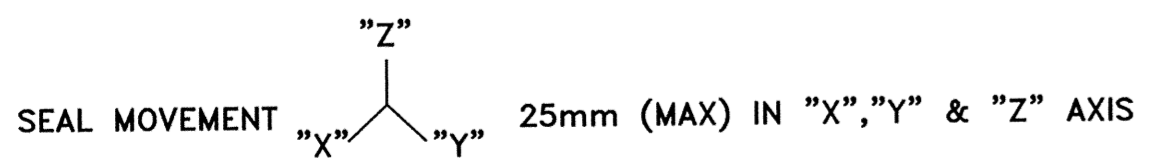
**DOUBLE PENETRATION ARRANGEMENT**

**SINGLE PENETRATION ARRANGEMENT**



APPLY 128Kg/M3 CERAMIC FIBROUS CEMENTATIOUS INSULATION AT POSITIONS SHOWN TO A THICKNESS OF 25mm MIN.  
FOR DOUBLE PENETRATION REPEAT ABOVE AND BELOW FOR DECK OR BLAST WALL

CLIPPING LENGTHS OF SEAL AS PER DIMENSIONS "E" & "F" ACCOMMODATE THE USE OF SINGLE BAND CLAMP APPLICATIONS UP TO 350mm DIAMETER OVER PIPES AND SLEEVES WITH DOUBLE CLAMPING APPLIED FOR DIAMETERS OF PIPES AND SLEEVES OVER 350mm.



NOTE THAT SEAL IS TO BE COMPRESSED BY 25mm IN "Z" AXIS WHEN INSTALLED

FOR REQUIREMENTS WHERE MORE THAN 25mm IN ANY DIRECTION ARE REQUIRED IT WILL BE NECESSARY TO INCREASE THE OVERALL HEIGHT OF THE SEAL. IN THESE CASES PLEASE CONSULT WITH BESTOBELL OILFIELD PRODUCTS GIVING MAXIMUM HEIGHT AVAILABLE FOR SEAL AND ANY OTHER CONSTRICTING DIMENSIONS.

FOR PIPE SIZES NOT INCLUDED IN THE TABLE PLEASE CONTACT BESTOBELL OILFIELD PRODUCT FOR FURTHER INFORMATION

PIPE SIZE	DIMENSION "A" PIPE SIZE OUTSIDE DIA	SLEEVE SIZE	DIMENSION "B" SLEEVE SIZE OUTSIDE DIA	DIMENSION "C" MINIMUM	DIMENSION "D" MINIMUM	DIMENSION "E" FOR SLEEVE CLAMPING	DIMENSION "F" FOR PIPE CLAMPING	SEAL HEIGHT "G"
3/4"	1.05"(26.7mm)	4"	4.5"(114.3mm)	100mm	227mm	25mm	25mm	152mm
1"	1.315"(33.4mm)	6"	6.625"(168.3mm)	100mm	227mm	25mm	25mm	152mm
1 1/2"	1.9"(48.3mm)	6"	6.625"(168.3mm)	100mm	227mm	25mm	25mm	152mm
2"	2.3755"(60.3mm)	6"	6.625"(168.3mm)	100mm	227mm	25mm	25mm	152mm
3"	3.5"(88.9mm)	8"	8.625"(219.1mm)	100mm	227mm	25mm	25mm	152mm
4"	4.5"(114.3mm)	8"	8.625"(219.1mm)	100mm	227mm	25mm	25mm	152mm
5"	5.563"(141.3mm)	8"	8.625"(219.1mm)	100mm	227mm	25mm	25mm	152mm
6"	6.625"(168.3mm)	12"	12.75"(323.9mm)	100mm	227mm	25mm	25mm	203mm
8"	8.625"(219.1mm)	14"	14"(355.67mm)	100mm	253mm	50mm	25mm	203mm
10"	10.75"(273.1mm)	16"	16"(406.4mm)	100mm	253mm	50mm	25mm	254mm
12"	12.75"(323.9mm)	18"	18"(457.2mm)	100mm	304mm	50mm	50mm	254mm
14"	14"(355.67mm)	20"	20"(508mm)	100mm	304mm	50mm	50mm	254mm
16"	16"(406.4mm)	24"	24"(609.6mm)	100mm	304mm	50mm	50mm	254mm
18"	18"(457.2mm)	28"	28"(711.2mm)	100mm	304mm	50mm	50mm	254mm
20"	20"(508mm)	28"	28"(711.2mm)	100mm	304mm	50mm	50mm	254mm
24"	24"(609.6mm)	32"	32"(812.8mm)	100mm	304mm	50mm	50mm	254mm
30"	30"(762mm)	36"	36"(914.4mm)	100mm	304mm	50mm	50mm	254mm

1	21 02 11	FIRST ISSUE	MW
ISSUE DATE	REVISIONS	DRAWN/CHKD	

COMPUTER AIDED DRAWING  
NO MANUAL ALTERATION

THIRD ANGLE PROJECTION  
TOLERANCES ±3 mm

IF IN DOUBT ASK  
DO NOT SCALE  
CAGE CODE K1406  
SCALE

ALL DIMENSIONS ARE IN MILLIMETRES UNLESS OTHERWISE STATED

Export Control Standard	CUSTOMER DRAWING NUMBER	N/A
CI Number	GENERIC LAYOUT FOR A80/H40-H120 FIRE SEALS	
Technology		
Raised by	M.Widdowson	SHEET 1 OF 1 DRAWING NUMBER BFT1500 BBB